

Temple Walk, Plymouth

Guide Price £275,000

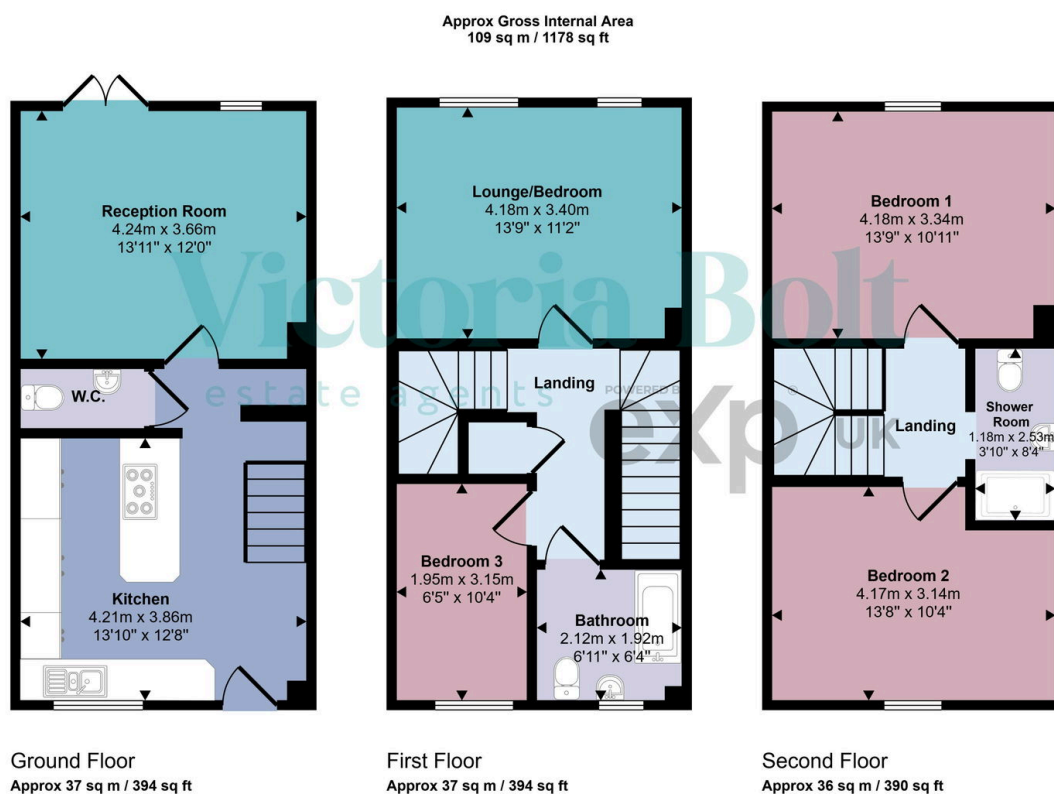
🛏 4 🚗 3 🛋 1



This spacious three/four-bedroom semi-detached home is spread over three well-designed floors and is located at the end of a cul-de-sac in Temple Walk, Plymouth. With two private parking spaces, flexible living accommodation, and a low-maintenance garden with sandstone paving and a shed, it's ideal for families or professionals seeking modern living in a convenient location.

Key Features

- Three/four-bedroom semi-detached home
- Spacious kitchen with breakfast bar
- First floor lounge that can be used as a fourth bedroom
- Downstairs WC for added convenience
- Low-maintenance rear garden with sandstone paving
- Flexible layout across three floors
- Ground floor reception room with garden access
- Modern family bathroom and additional shower room
- Two private parking spaces at the front
- Garden shed offering extra storage



This floorplan is only for illustrative purposes and is not to scale. Measurements of rooms, doors, windows, and any items are approximate and no responsibility is taken for any error, omission or mis-statement. Icons of items such as bathroom suites are representations only and may not look like the real items. Made with Made Snappy 360.