





# The Thatches Holiday Park, Modbury

Guide Price £140,000

🛏 2 🚿 2 🛋 1

- Holiday lodge in the heart of the South Hams
- Open plan lounge, kitchen and dining area
- Separate family bathroom
- Decking area at the rear
- 76 years left on the licence
- Two bedrooms (originally three)
- Ensuite to master bedroom
- Decked balcony at the front
- Private lawned garden
- Fantastic facilities at the holiday village, including a cinema room, swimming pool, fully equipped gym and play area



Situated in the peaceful 16-acre grounds of The Thatches Holiday Village near Modbury, this two-bedroom lodge offers a relaxing retreat with award-winning gardens and excellent on-site amenities, including a heated indoor pool, gym, sauna, steam room, cinema, and games room.

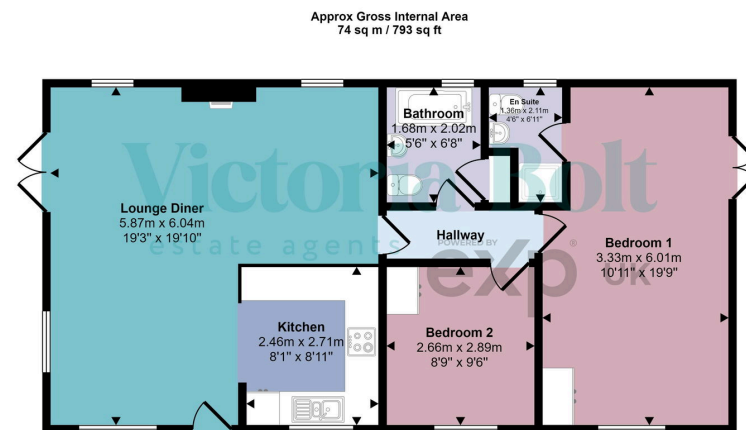
The lodge features two double bedrooms, with the master benefiting from an en-suite, a separate family bathroom, and a spacious open-plan lounge, kitchen, and dining area filled with natural light. The kitchen has space for a washing machine, fridge, and dishwasher.

Outside, there are decked areas at the front and rear, a private lawned garden, and an allocated parking space. Ideally located near Modbury and the stunning South Devon coastline, this lodge is perfect for a peaceful getaway or an investment in a sought-after holiday village.









Floorplan

This floorplan is only for illustrative purposes and is not to scale. Measurements of rooms, doors, windows, and any items are approximate and no responsibility is taken for any error, omission or mis-statement. Icons of items such as bathroom suites are representations only and may not look like the real items. Made with Made Snappy 360.

