





# Luscombe Close, Paignton

Guide Price £260,000

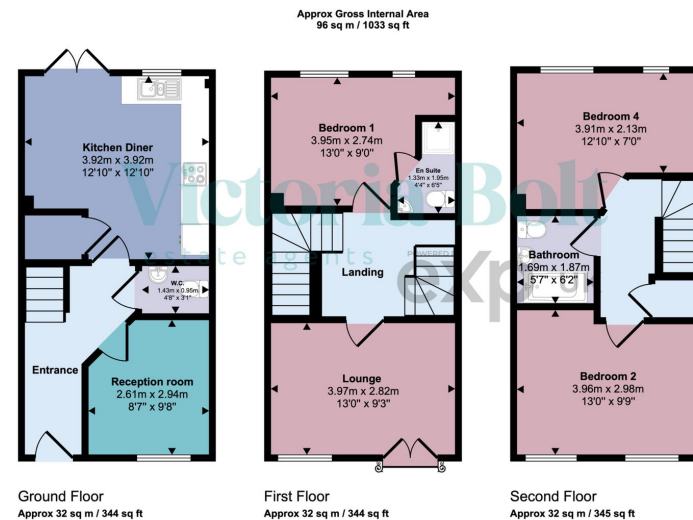
3 2 2





- Three-storey attached house
- Spacious kitchen diner
- Lounge with Juliet balcony
- Three double bedrooms
- Enclosed rear garden
- Off road parking
- Existing NHBC warranty still in place
- Light and bright throughout
- Nearby amenities
- Town location





This floorplan is only for illustrative purposes and is not to scale. Measurements of rooms, doors, windows, and any items are approximate and no responsibility is taken for any error, omission or mis-statement. Icons of items such as bathroom suites are representations only and may not look like the real items. Made with Made Snappy 360.

A bright, airy, and spacious three-storey home nestled in the picturesque seaside town of Paignton. This beautifully designed property offers generous living space, perfect for modern family life, and is conveniently located just a short walk from a variety of local amenities.

