



Victoria Bolt
estate agents POWERED BY **exp** UK

Ursa Gardens, Sherford

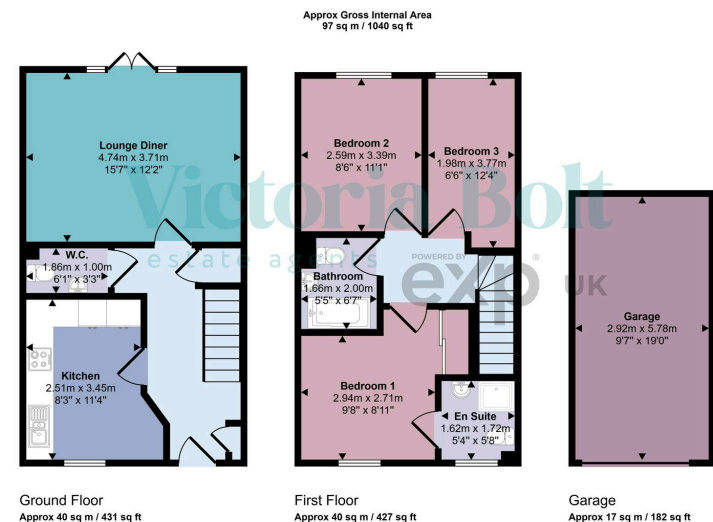
Guide Price £300,000

3 3 1



- Three-bedroom terraced home
- Modern kitchen with integrated appliances
- Beautiful front garden
- Master bedroom with en-suite
- Landscaped split-level rear garden
- Spacious lounge/diner
- Convenient downstairs WC
- Family bathroom on the first floor
- Single garage with parking in front
- Close to local amenities, green spaces, and transport links





This floorplan is only for illustrative purposes and is not to scale. Measurements of rooms, doors, windows, and any items are approximate and no responsibility is taken for any error, omission or mis-statement. Icons of items such as bathroom suites are representations only and may not look like the real items. Made with Made Snappy 360.

This stylish three-bedroom terraced house is located in Sherford, offering contemporary living with a modern kitchen, a landscaped split-level rear garden, and a garage and drive. The ground floor features a bright lounge/diner, a sleek kitchen, and a downstairs W.C. Upstairs, there are three well-proportioned bedrooms, including a primary bedroom with an en-suite, plus a family bathroom. A beautiful front garden adds to the home's appeal. Conveniently located near local amenities, green spaces, and transport links, this is an ideal home for families or professionals. Viewing is highly recommended!

