



Victoria Bolt
estate agents POWERED BY **exp** UK

Ballad Gardens, Plymouth

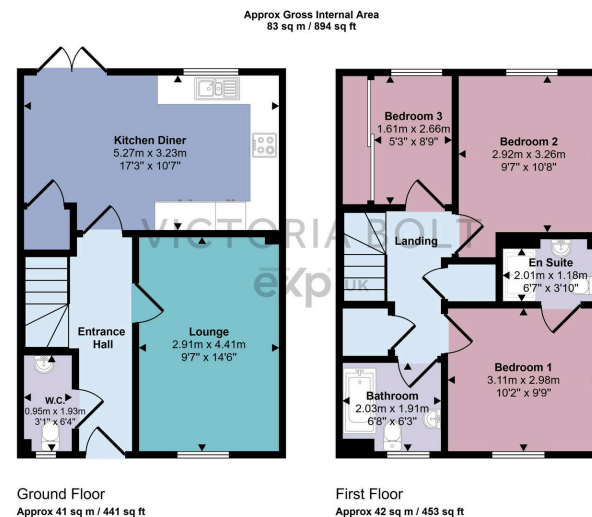
Guide Price £270,000

🛏 3 🚿 3 🚿 1



- Semi detached family home
- Modern kitchen-diner with ample space and natural light
- Spacious and bright lounge, perfect for relaxation or entertaining
- Convenient downstairs WC for added practicality
- Master bedroom with a private en-suite shower room
- Two additional bedrooms
- Contemporary family bathroom with stylish fittings
- Low-maintenance rear garden with artificial grass and large patio area
- Off-street parking for several cars
- Located in a desirable area, perfect for modern family living





This floorplan is only for illustrative purposes and is not to scale. Measurements of rooms, doors, windows, and any items are approximate and no responsibility is taken for any error, omission or mis-statement. Icons of items such as bathroom suites are representations only and may not look like the real items. Made with Made Snappy 360.

This stylish and practical home offers a spacious lounge, a bright kitchen-diner, and a convenient downstairs WC. Upstairs features a master bedroom with an en-suite, two additional bedrooms, and a modern family bathroom. Outside, the low-maintenance rear garden boasts a large patio and a small artificial grass area, perfect for relaxing or entertaining. The property also benefits from off-street parking for several cars, making it an ideal choice for modern family living.

