



Victoria Bolt
estate agents POWERED BY **exp** UK

Gransmore Walk, Ermington

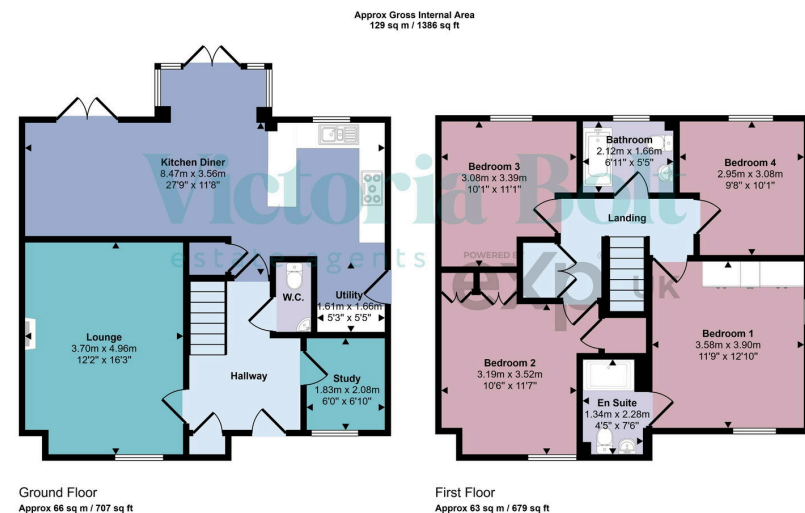
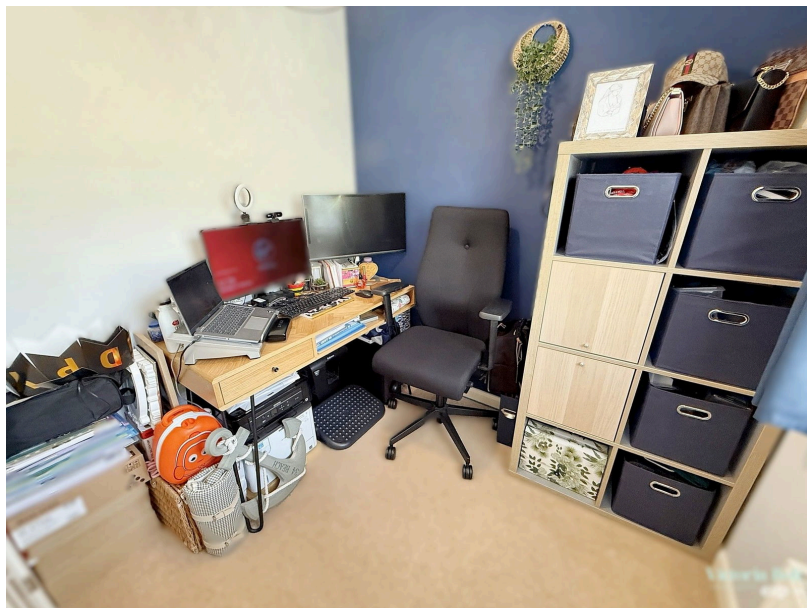
Guide Price £485,000

🛏 4 🚿 3 🚗 1



- Stunning four double bedroom detached home
- Separate utility room & WC
- En-suite shower room in the master bedroom
- Spacious, southerly facing split-level garden with lawn & children's play area
- Sought-after location in Ermington
- Modern kitchen diner with double doors leading to decking
- Spacious lounge
- Family bathroom on the first floor
- Large wraparound decking with side access
- Beautiful views over Ermington towards the woods





This stunning 4-bedroom detached home offers modern family living with a spacious kitchen diner, separate lounge, study, utility room, and W.C. Upstairs, the master bedroom features an en-suite, with three additional double bedrooms and a family bathroom.

The split-level rear garden boasts a wrap-around decking area with a set of 'French' doors leading from the kitchen, a large lawn, and a pebbled children's play area. Located in a sought-after location in the village of Ermington, this home is perfect for family living.

Contact us today to arrange a viewing!

