



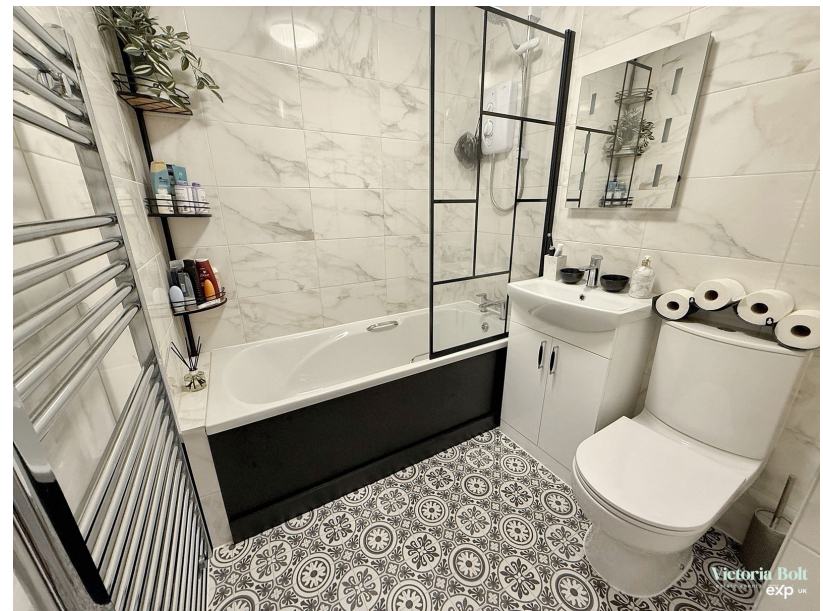
Saffron Court, Kingsbridge

Guide Price £220,000

🛏 2 🍳 1 🚿 1



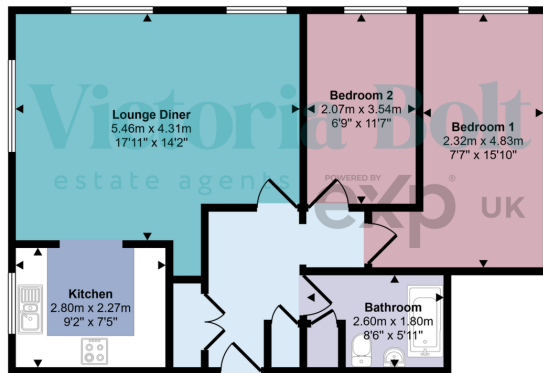
- First floor apartment
- Bright and airy lounge
- Well appointed kitchen with integrated appliances
- Two double bedrooms
- Modern fitted bathroom
- Well kept communal gardens
- Communal parking
- Far reaching views
- Share of freehold
- Town location



A light, airy and spacious first floor apartment situated in the picturesque market town of Kingsbridge. The apartment offers generous accommodation throughout and is only a short walk to all the local amenities.



Approx Gross Internal Area
64 sq m / 692 sq ft



Floorplan

This floorplan is only for illustrative purposes and is not to scale. Measurements of rooms, doors, windows, and any items are approximate and no responsibility is taken for any error, omission or mis-statement. Icons of items such as bathroom suites are representations only and may not look like the real items. Made with Made Snappy 360.

