



2 Bed  
Apartment  
located in

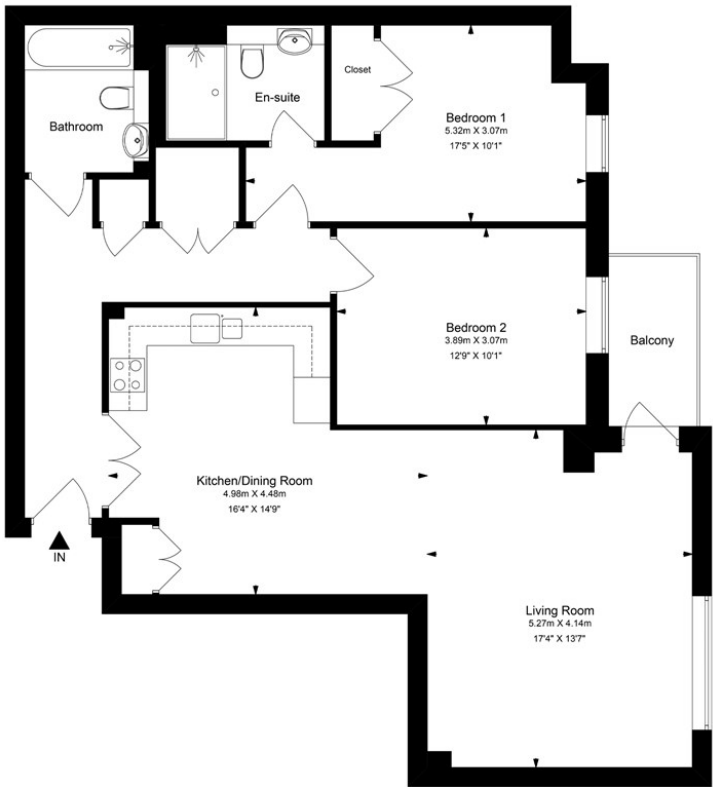
£2,000 PCM



# Anchorage, Wapping Wharf, Bristol, BS1 6UW

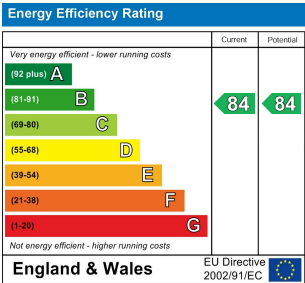
Total Approximate Gross Internal Area = 90.7 sq m/976.2 sq ft

(Excludes Balcony)



This floor plan has been drawn using RICS guidelines (GIA)

Disclaimer: Please note this floor plan is for marketing purposes and is to be used as a guide only.  
All efforts have been made to ensure its accuracy at time of print.



## DIRECTIONS

## CONTACT

Second Floor 9 Queen Square  
Bristol  
BS1 1JE

E: [hello@acenproperties.co.uk](mailto:hello@acenproperties.co.uk)  
T: 01173634411  
9 Queen Square

