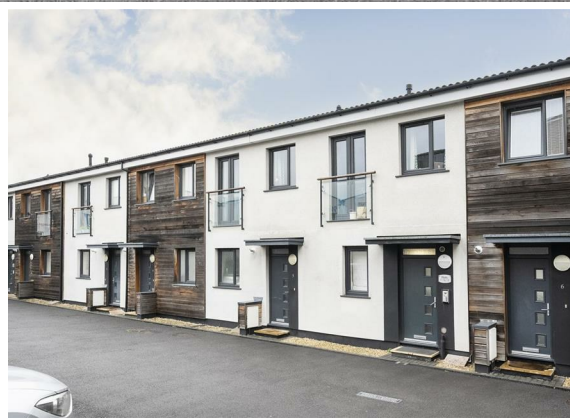




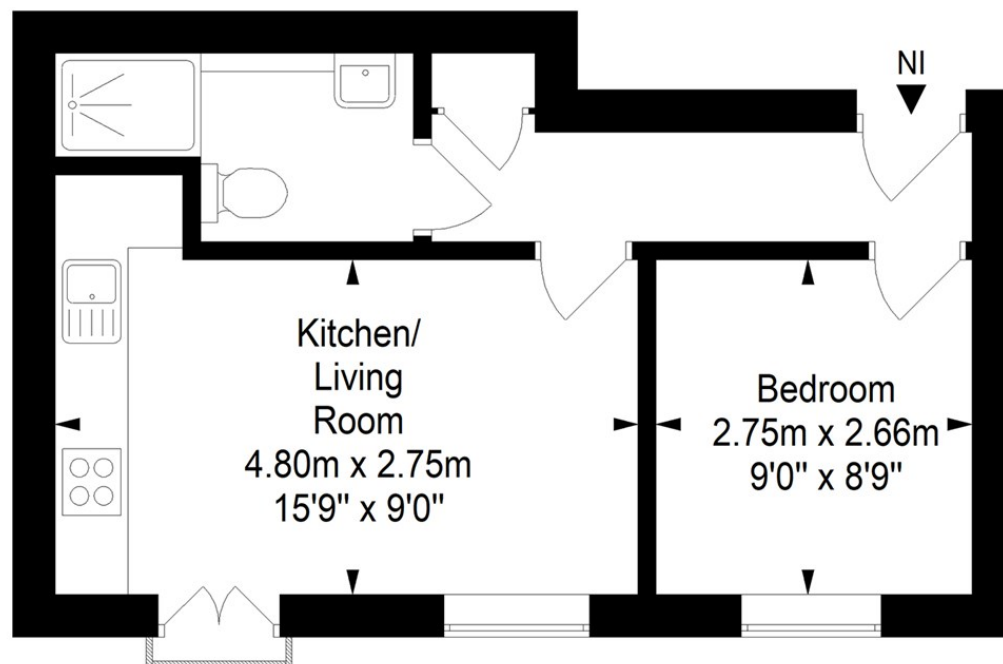
**1 Bed
Apartment
located
in Bedminster**

£1,400 Per Month



Lock Mill House, Novers Hill, Bedminster, Bristol, BS3 5DP

Approximate Gross Internal Area = 34.6 sq m/ 372.0 sq ft



This floor plan has been drawn using RICS guidelines (GIA)

Disclaimer : Please note this floor plan is for marketing purposes and is to be used as guide only.
All Efforts have been made to ensure its accuracy at time of print

Energy Efficiency Rating		
	Current	Potential
Very energy efficient - lower running costs		
(92 plus) A		
(81-91) B		
(69-80) C		
(55-68) D		
(39-54) E		
(21-38) F		
(1-20) G		
Not energy efficient - higher running costs		
England & Wales		
EU Directive 2002/91/EC		

DIRECTIONS

CONTACT

Newminster House 27-28 Baldwin
Street
Bristol
BS1 1LT

E: hello@acenproperties.co.uk
T: 01173634411

