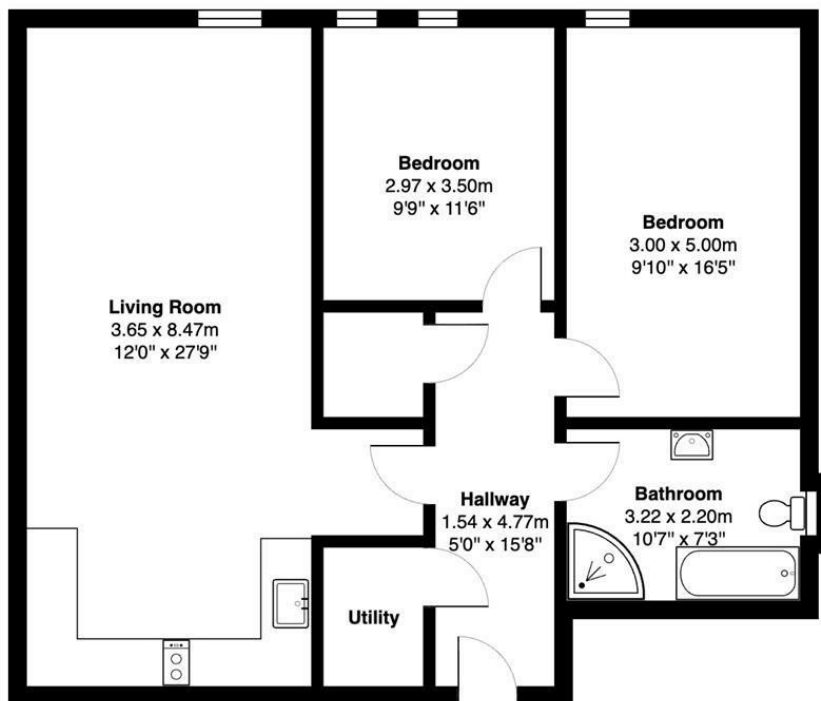




**2 Bed  
Apartment  
located in**

**£325,000**





Total Area: 80.7 m<sup>2</sup> ... 869 ft<sup>2</sup>

All measurements are approximate and for display purposes only



## DIRECTIONS

## CONTACT

Newminster House 27-29 Baldwin  
Street  
Bristol  
BS1 1LT

E: [hello@acenproperties.co.uk](mailto:hello@acenproperties.co.uk)  
T: 01173634411

| Energy Efficiency Rating                    |         |           |
|---|---------|-----------|
|   | Current | Potential |
| Very energy efficient - lower running costs |         |           |
| (92 plus) <b>A</b>                          |         |           |
| (81-91) <b>B</b>                            |         |           |
| (69-80) <b>C</b>                            | 78      | 78        |
| (55-68) <b>D</b>                            |         |           |
| (39-54) <b>E</b>                            |         |           |
| (21-38) <b>F</b>                            |         |           |
| (1-20) <b>G</b>                             |         |           |
| Not energy efficient - higher running costs |         |           |
| EU Directive 2002/91/EC                     |         |           |
| England & Wales                             |         |           |

