



**2 Bed
Apartment
located in**

Asking Price £425,000

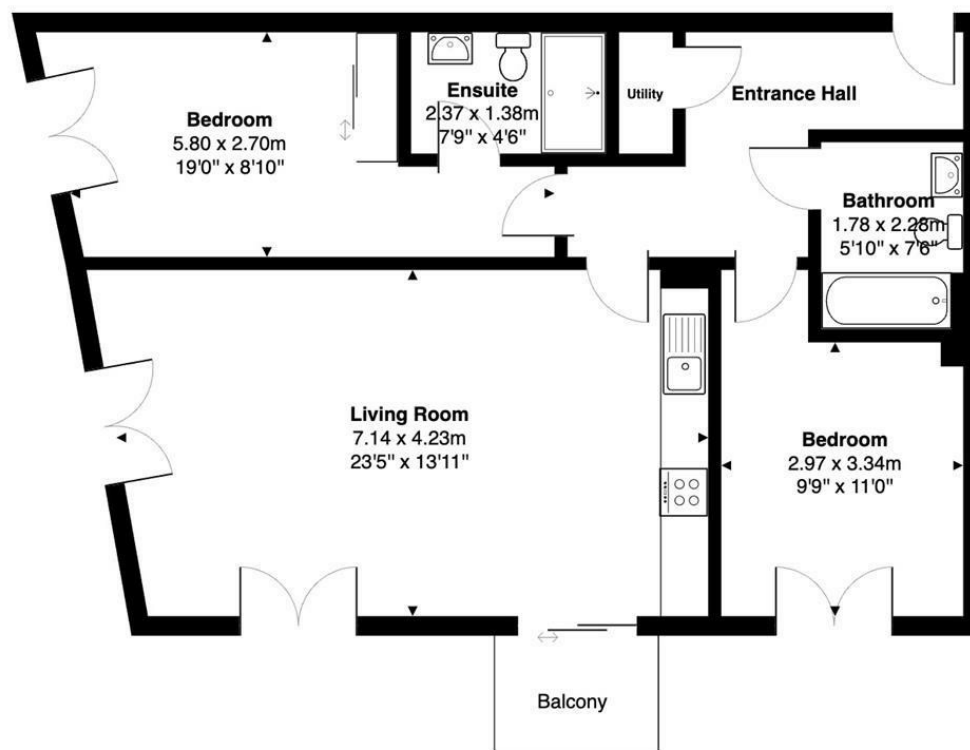


DIRECTIONS

CONTACT

Newminster House 27-29 Baldwin
Street
Bristol
BS1 1LT

E: hello@acenproperties.co.uk
T: 01173634411



Total Area: 75.7 m² ... 815 ft²

All measurements are approximate and for display purposes only



| Energy Efficiency Rating | | |
|---|-------------------------|-----------|
| | Current | Potential |
| Very energy efficient - lower running costs | | |
| (92 plus) A | | |
| (81-91) B | 87 | 87 |
| (69-80) C | | |
| (55-68) D | | |
| (39-54) E | | |
| (21-38) F | | |
| (1-20) G | | |
| Not energy efficient - higher running costs | | |
| England & Wales | EU Directive 2002/91/EC | |

