

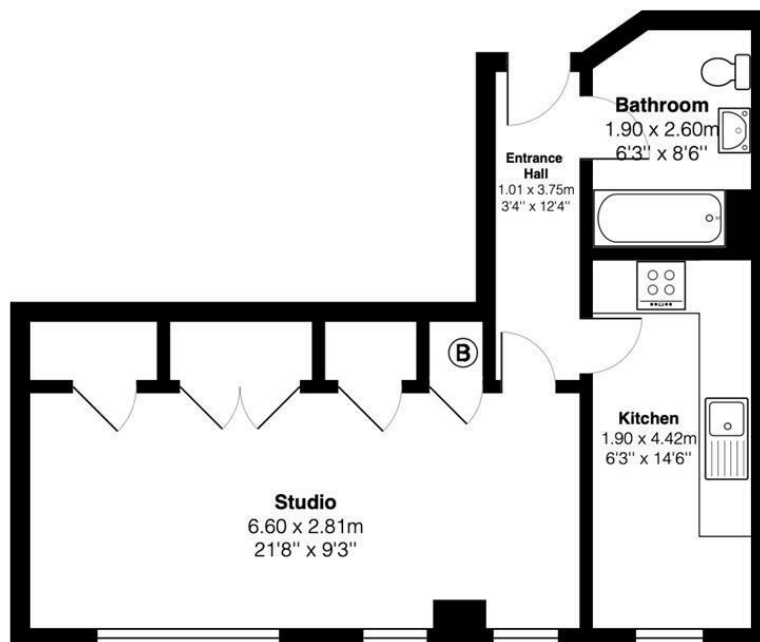


0 Bed  
Apartment  
located in

Asking Price £200,000



## DIRECTIONS



Total Area: 41.9 m<sup>2</sup> ... 450 ft<sup>2</sup>

All measurements are approximate and for display purposes only



## CONTACT

Newminster House 27-29 Baldwin Street  
Bristol  
BS1 1LT

E: [hello@acenproperties.co.uk](mailto:hello@acenproperties.co.uk)  
T: 01173634411

Energy Efficiency Rating		Current	Potential
Very energy efficient - lower running costs			
(92 plus) A			
(81-91) B		79	82
(69-80) C			
(55-68) D			
(39-54) E			
(21-38) F			
(1-20) G			
Not energy efficient - higher running costs			
England & Wales		EU Directive 2002/91/EC	

