



**3 Bed
Apartment
located in St.
George**

£320,000

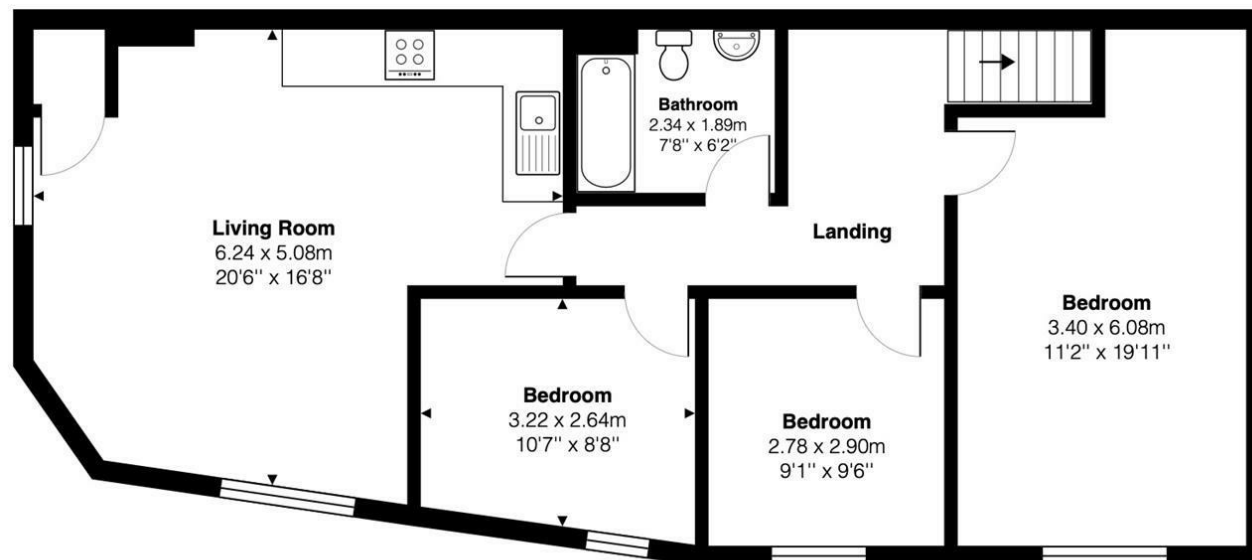


DIRECTIONS

CONTACT

Newminster House 27-29 Baldwin
Street
Bristol
BS1 1LT

E: hello@acenproperties.co.uk
T: 01173634411



Total Area: 82.1 m² ... 884 ft²

All measurements are approximate and for display purposes only



Energy Efficiency Rating		
	Current	Potential
Very energy efficient - lower running costs		
(92 plus) A		
(81-91) B	82	82
(69-80) C		
(55-68) D		
(39-54) E		
(21-38) F		
(1-20) G		
Not energy efficient - higher running costs		
England & Wales	EU Directive 2002/91/EC	

