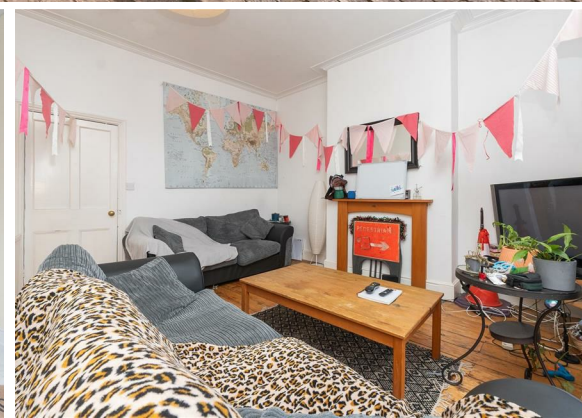




**4 Bed
Maisonette
located in**

Asking Price £550,000

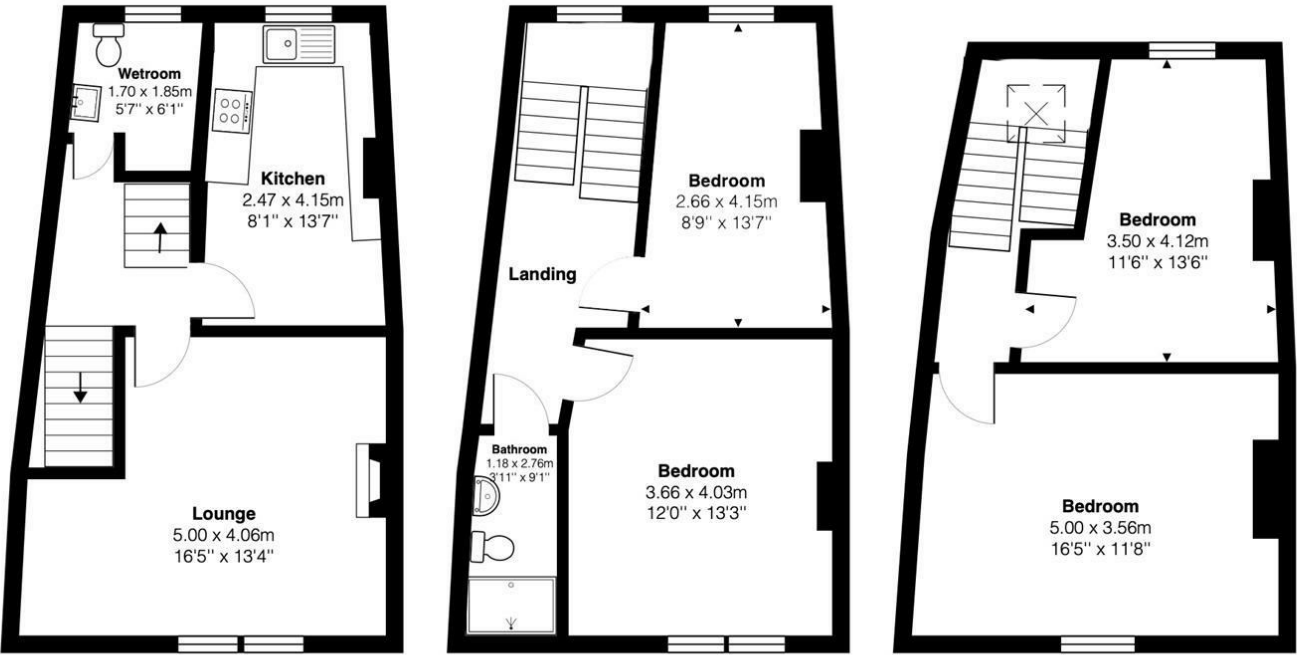


DIRECTIONS

CONTACT

Newminster House 27-29 Baldwin
Street
Bristol
BS1 1LT

E: hello@acenproperties.co.uk
T: 01173634411



Total Area: 109.4 m² ... 1178 ft²
All measurements are approximate and for display purposes only



Energy Efficiency Rating		
	Current	Potential
Very energy efficient - lower running costs		
(92 plus) A		
(81-91) B		
(69-80) C		
(55-68) D		
(39-54) E		
(21-38) F		
(1-20) G		
Not energy efficient - higher running costs		
EU Directive 2002/91/EC		
England & Wales		