

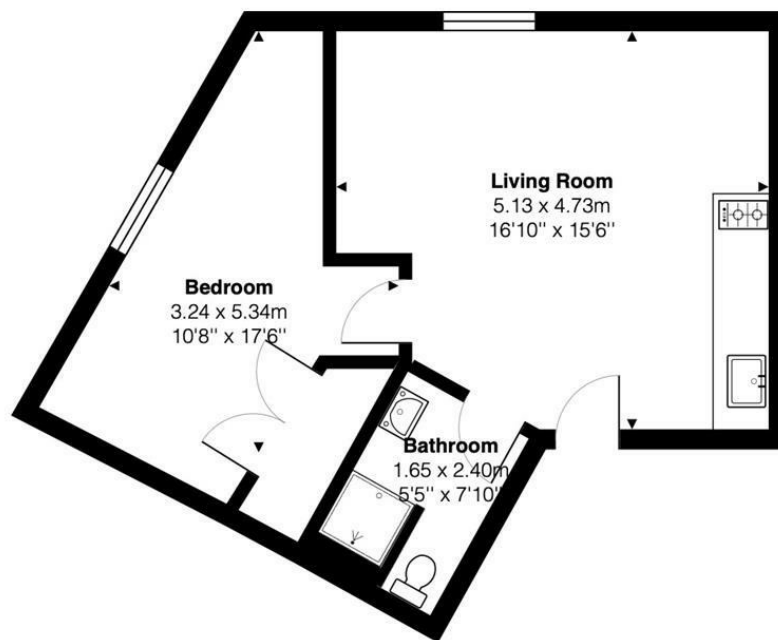


1 Bed
Apartment
located in

Asking Price £225,000



DIRECTIONS



Total Area: 40.0 m² ... 430 ft²

All measurements are approximate and for display purposes only



CONTACT

Newminster House 27-29 Baldwin Street
Bristol
BS1 1LT

E: hello@acenproperties.co.uk
T: 01173634411

Energy Efficiency Rating		Current	Potential
Very energy efficient - lower running costs			
(92 plus) A			
(81-91) B		80	82
(69-80) C			
(55-68) D			
(39-54) E			
(21-38) F			
(1-20) G			
Not energy efficient - higher running costs			
England & Wales		EU Directive 2002/91/EC	

