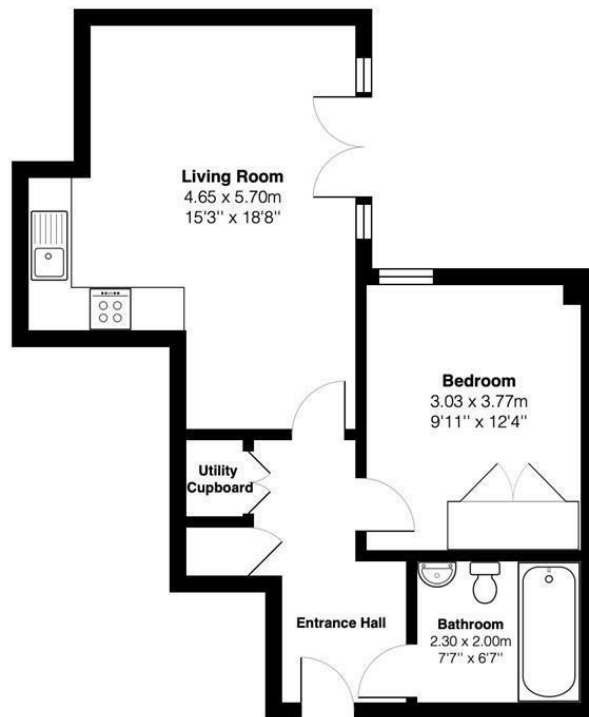




**1 Bed
Apartment
located in**

£1,600





Total Area: 47.3 m² ... 509 ft²

All measurements are approximate and for display purposes only

| Energy Efficiency Rating | | |
|---|---------|-----------|
| | Current | Potential |
| Very energy efficient - lower running costs | | |
| (92 plus) A | | |
| (81-91) B | 81 | 81 |
| (69-80) C | | |
| (55-68) D | | |
| (39-54) E | | |
| (21-38) F | | |
| (1-20) G | | |
| Not energy efficient - higher running costs | | |
| England & Wales EU Directive 2002/91/EC | | |

DIRECTIONS

CONTACT

Newminster House 27-28 Baldwin
Street
Bristol
BS1 1LT

E: hello@acenproperties.co.uk
T: 01173634411

