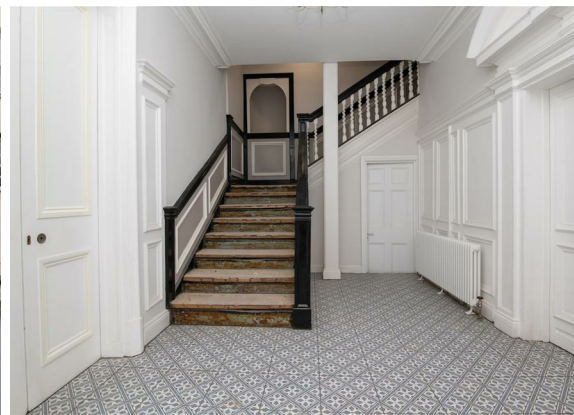





**9 Bed
House - End
Terrace
located in**

Asking Price £1,300,000





Energy Efficiency Rating		
	Current	Potential
Very energy efficient - lower running costs		
(92 plus) A		
(81-91) B		
(69-80) C		
(55-68) D		
(39-54) E		
(21-38) F		
(1-20) G		
Not energy efficient - higher running costs		
EU Directive 2002/91/EC 		
England & Wales		

DIRECTIONS

CONTACT

Newminster House 27-29 Baldwin Street
 Bristol
 BS1 1LT

E: hello@acenproperties.co.uk
 T: 01173634411

