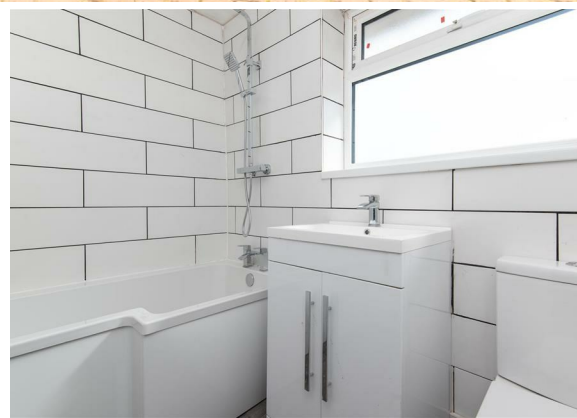
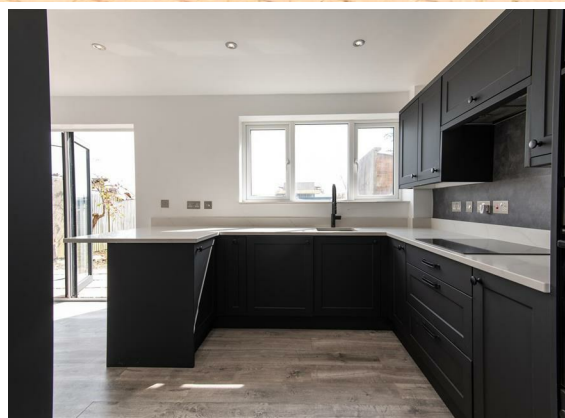




**4 Bed  
House - End  
Terrace  
located in**

**£2,600 Per Month**

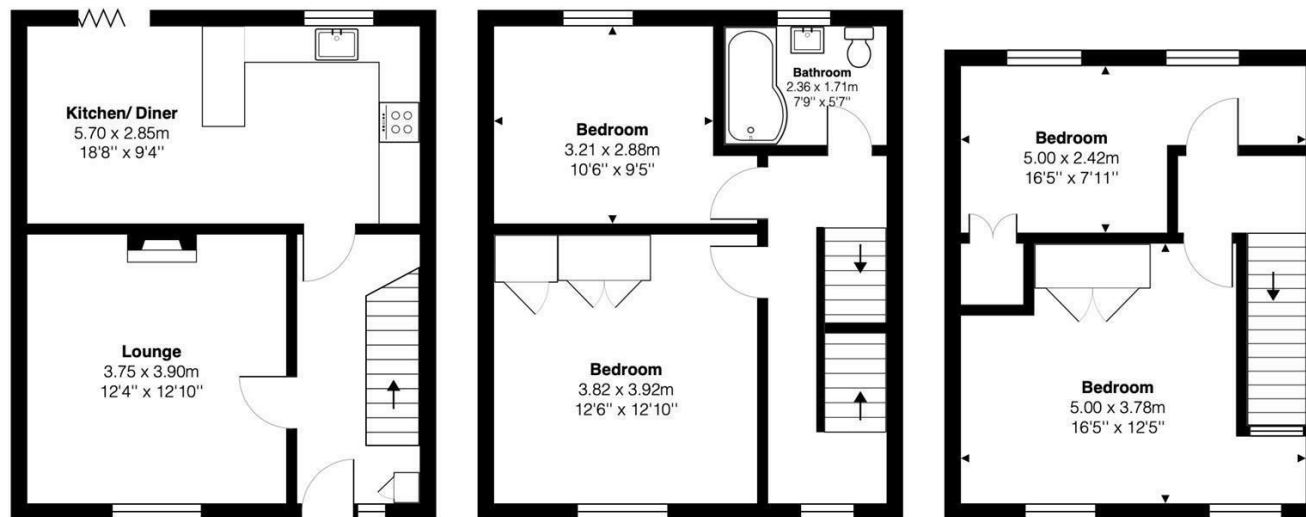


## DIRECTIONS

## CONTACT

Newminster House 27-28 Baldwin  
Street  
Bristol  
BS1 1LT

E: [hello@acenproperties.co.uk](mailto:hello@acenproperties.co.uk)  
T: 01173634411



Total Area: 110.7 m<sup>2</sup> ... 1191 ft<sup>2</sup>

All measurements are approximate and for display purposes only

Energy Efficiency Rating		
	Current	Potential
Very energy efficient - lower running costs		
(92 plus) <b>A</b>		
(81-91) <b>B</b>		
(69-80) <b>C</b>		
(55-68) <b>D</b>		
(39-54) <b>E</b>		
(21-38) <b>F</b>		
(1-20) <b>G</b>		
Not energy efficient - higher running costs		
England & Wales EU Directive 2002/91/EC		

