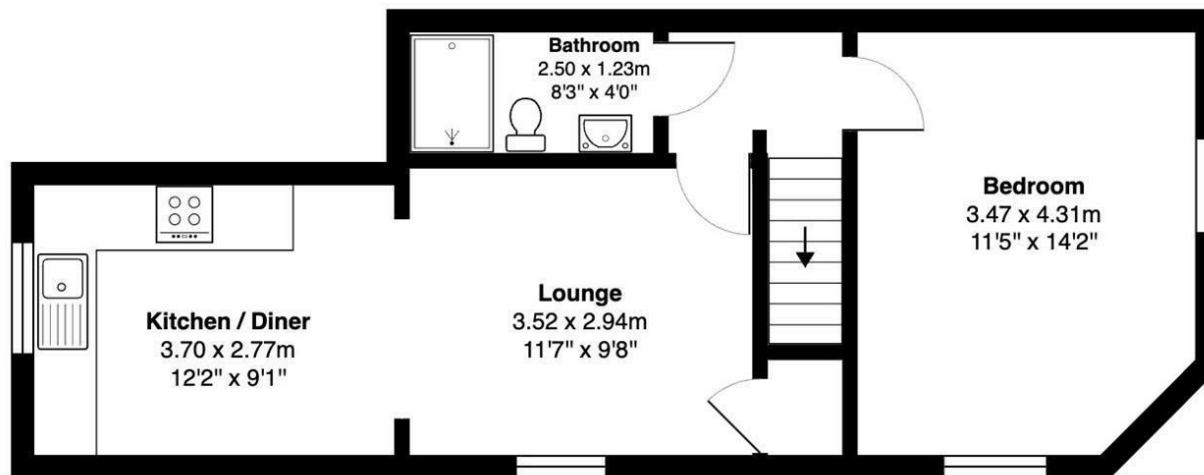




**1 Bed
Apartment
located in**

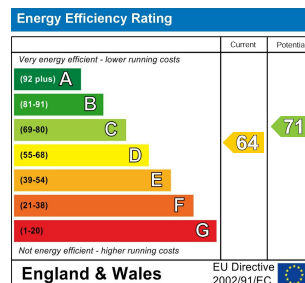
Asking Price £260,000





Total Area: 45.3 m² ... 487 ft²

All measurements are approximate and for display purposes only



DIRECTIONS

CONTACT

Newminster House 27-29 Baldwin
Street
Bristol
BS1 1LT

E: hello@acenproperties.co.uk
T: 01173634411

