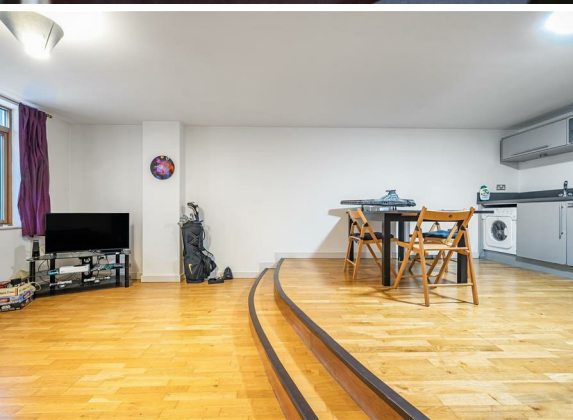


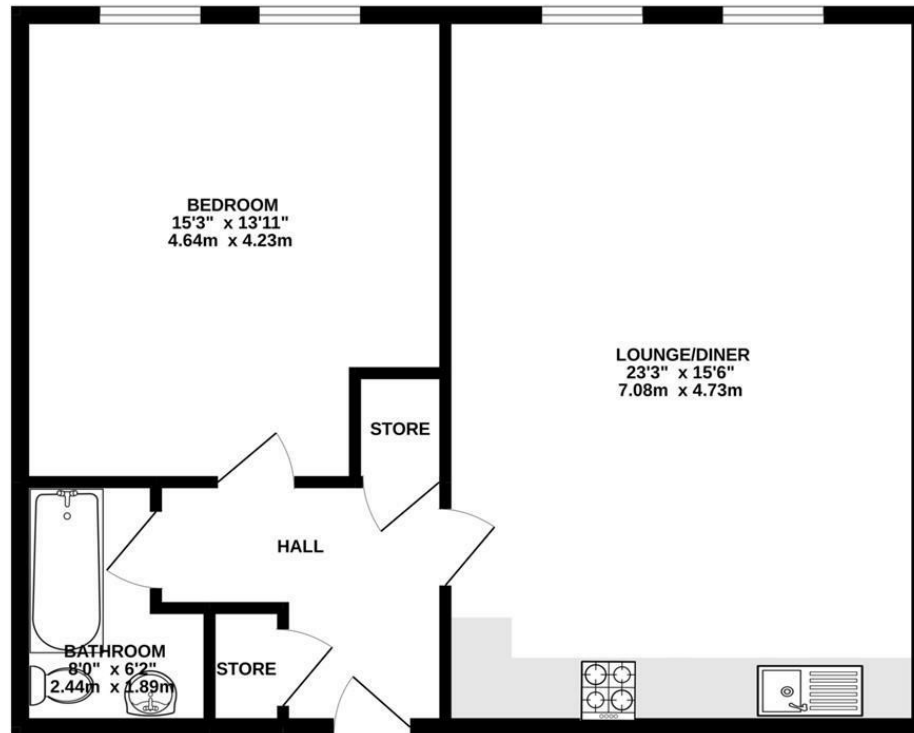


**1 Bed  
Apartment  
located in**

Asking Price £235,000

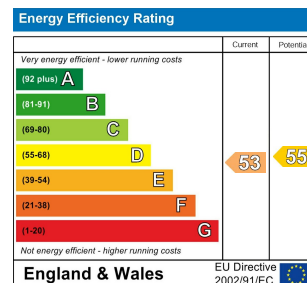


SECOND FLOOR  
646 sq.ft. (60.0 sq.m.) approx.



TOTAL FLOOR AREA: 646 sq.ft. (60.0 sq.m.) approx.

Whilst every attempt has been made to ensure the accuracy of the floorplan contained here, measurements of doors, windows, rooms and any other items are approximate and no responsibility is taken for any error, omission or mis-statement. This plan is for illustrative purposes only and should be used as such by any prospective purchaser. The services, systems and appliances shown have not been tested and no guarantee as to their operability or efficiency can be given.  
Made with Metropix ©2022.



**DIRECTIONS**

**CONTACT**

Newminster House 27-29 Baldwin  
Street  
Bristol  
BS1 1LT

E: [hello@acenproperties.co.uk](mailto:hello@acenproperties.co.uk)  
T: 01173634411

