



**1 Bed
Flat
located in**

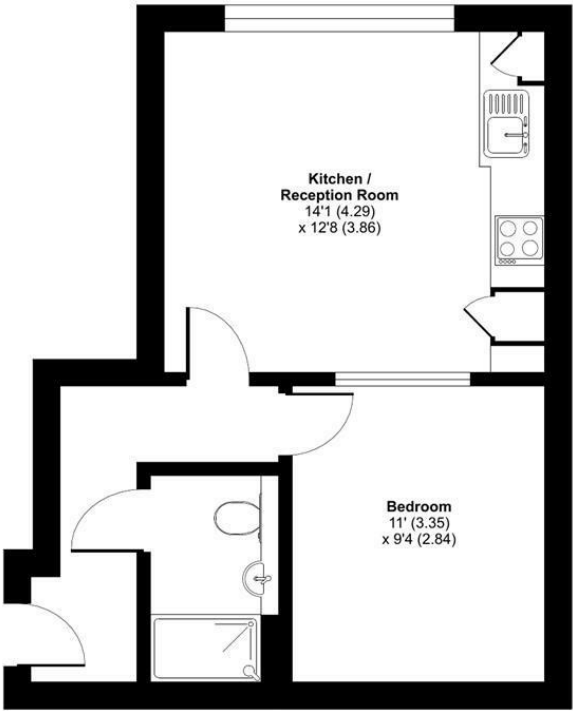
Offers Over £220,000



Wine Street, Bristol, BS1

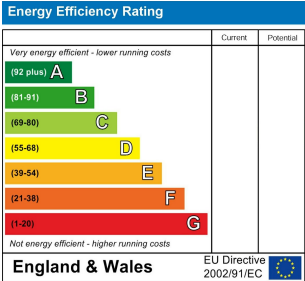
Approximate Area = 386 sq ft / 35.9 sq m

For identification only - Not to scale



FIFTH FLOOR

Floor plan produced in accordance with RICS Property Measurement 2nd Edition, Incorporating International Property Measurement Standards (IPMS2 Residential). © richcom 2025. Produced for Acen Properties. REF: 1243119



DIRECTIONS

CONTACT

Newminster House 27-29 Baldwin Street
Bristol
BS1 1LT

E: hello@acenproperties.co.uk
T: 01173634411

