

Flat

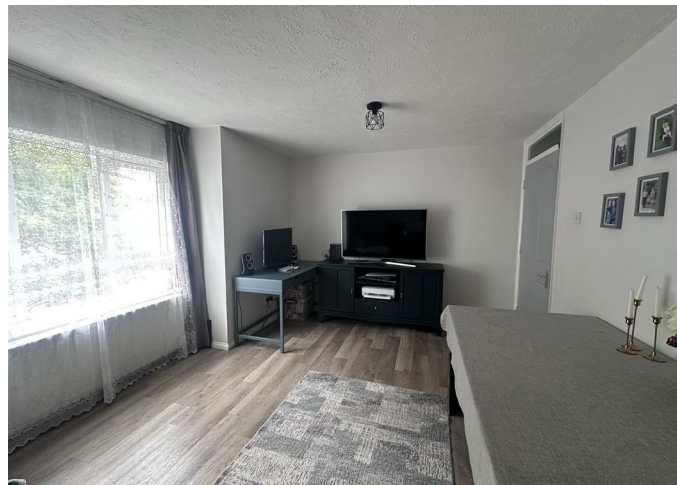
**259 FRANKLIN WAY,
CROYDON,
SURREY, CR0 4UX**

PCM

£1,550

FEATURES

- 2 large Bedrooms
- Close to Transportation
- Gas central heating with British Gas cover
- Available from 1st August 2025
- Allocated Parking Space
- Close to Local Amenities
- Unfurnished
- Large Living/Diner Room



iPropertyuk

2 Bedroom Flat located in Croydon

Call us on

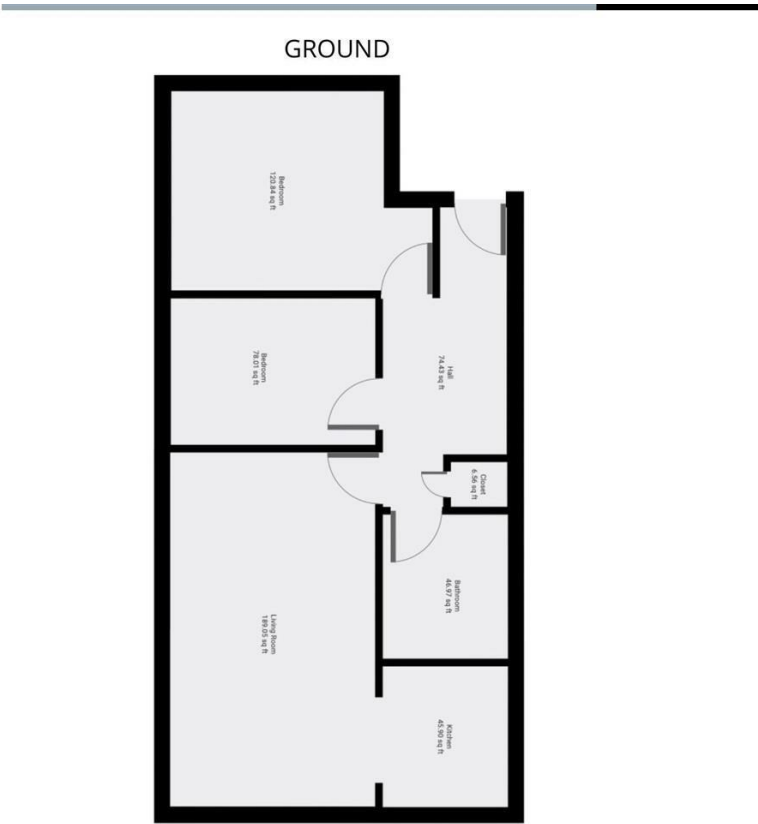
02080043898

info@ipropertyuk.com


This lovely 2 bedroom apartment is conveniently located within a short walk to Therapia Lane Tramlink stop which provides direct access into Croydon Town Centre, East Croydon Overground Rail Station, Mitcham Junction Rail Station and Wimbledon with excellent links into the city as well as being within easy reach of shops, supermarkets, kids entertainment and restaurants. Features to note: 2 large bedrooms, large lounge/diner, fully fitted kitchen, family bathroom, double glazing, gas central heating with British Gas cover and allocated parking space. The flat comes unfurnished and is available from August 1, 2025. Call now to book your viewing.

Council Tax Band - C
EPC Rating - C

Council Tax Band
C



THIS FLOORPLAN IS PROVIDED WITHOUT WARRANTY OF ANY KIND. SENSOPIA DISCLAIMS ANY WARRANTY INCLUDING, WITHOUT LIMITATION, SATISFACTORY QUALITY OR ACCURACY OF DIMENSIONS.

Energy Efficiency Rating		
	Current	Potential
Very energy efficient - lower running costs		
(92 plus) A		
(81-91) B		
(69-80) C		
(55-68) D		
(39-54) E		
(21-38) F		
(1-20) G		
Not energy efficient - higher running costs		
England & Wales		EU Directive 2002/91/EC 

Agents Note: Whilst every care has been taken to prepare these particulars, they are for guidance purposes only. All measurements are approximate and are for general guidance purposes only and whilst every care has been taken to ensure their accuracy, they should not be relied upon and potential buyers are advised to recheck the measurements.

iPropertyuk