




 **2**
Bedrooms

 **1**
Bathroom

 **1**
Receptions



PROPERTY FEATURES

- Split-level maisonette
- Chain free
- Local amenities nearby
- Regeneration area
- Ideal first home
- Recently refurbished

DESCRIPTION

London & Country is pleased to bring to the market this well-presented 2-bedroom maisonette. Recent upgrades to the kitchen and bathroom have been carried out, and the property is newly decorated and has new flooring.

The property offers over 850 sq. ft of spacious accommodation and benefits from its own private entrance. Stairs leads you to the first floor where there is an open plan reception and kitchen, and a good size second bedroom with built-in-cupboard. The second floor leads to a generously proportioned master bedroom with built in cupboard and Velux window allowing in plenty of light, a modern bathroom and under eave storage area. In addition there is a designated parking space and the property is chain-free.

Ideally located in an area undergoing regeneration, there are local amenities nearby for residents to enjoy, alongside excellent schools and great commuter links.

ADDITIONAL INFORMATION

Tenure: Leasehold

Approximate Length of Lease: 115 years

Estimated Service charges: £600 per annum

Ground Rent: £200 per annum

Council tax band: C

Local authority: London Borough of Southwark

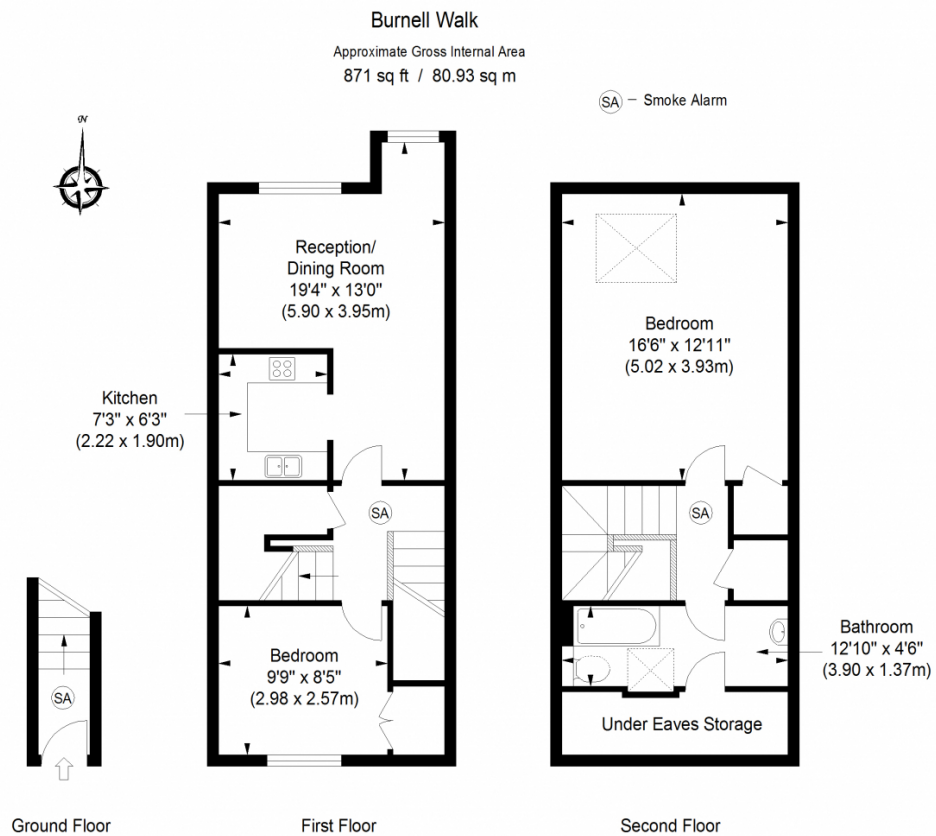
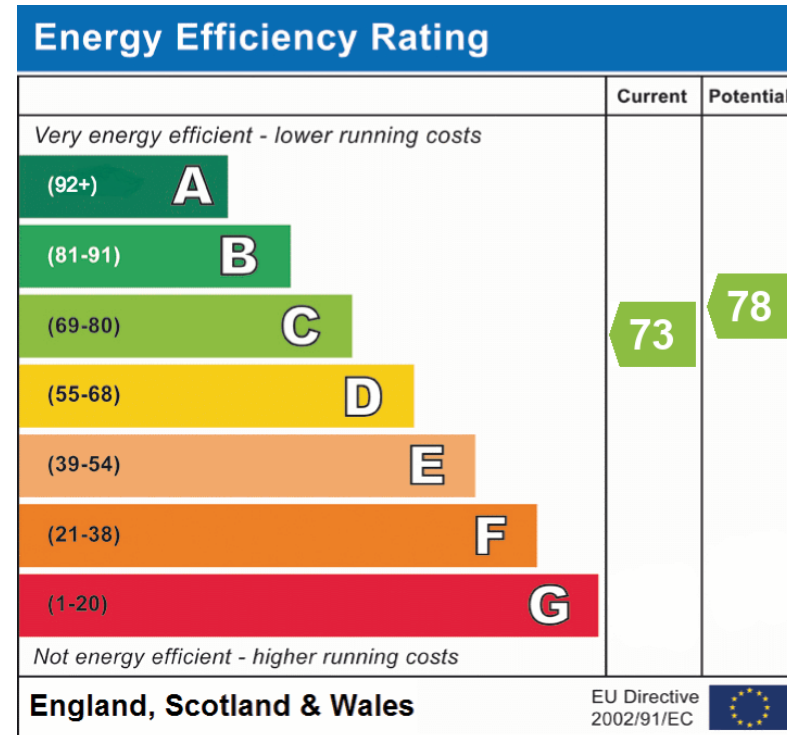


ILLUSTRATION FOR IDENTIFICATION PURPOSES ONLY

ALL MEASUREMENTS ARE MAXIMUM, AND INCLUDE WINDOW BAYS AND WARDROBES WHERE APPLICABLE
THIS PLAN MUST NOT BE REPRODUCED BY ANY OTHER PERSON WITHOUT PERMISSION



Address: 3, Burnell Walk, SE1 5RS

Tel : +442072315656

Email : info@lclproperty.com

Address : The Yellow House, 37 Plough Way, Surrey Quays, London SE16 2LS



Disclaimer

Agents Note: Whilst every care has been taken to prepare these sales particulars, they are for guidance purposes only. All measurements are approximate and are for general guidance purposes only and whilst every care has been taken to ensure their accuracy, they should not be relied upon and potential buyers are advised to recheck the measurements. Purchasers are advised to undertake their own measured survey prior to exchange of contracts.