




 **3**  
Bedrooms

 **2**  
Bathrooms

 **1**  
Receptions



## KEY FEATURES

- Parking
- 3 Private Balconies
- 24-hr Concierge Service
- Leisure Facilities
- Long Lease
- Close to Transport Hubs

## DESCRIPTION

Situated on the 18th floor is this well-appointed, spacious 3 bedroom, 2 bathroom apartment offering fabulous views from three private balconies.

Well presented throughout, this fabulous apartment has a semi open-plan kitchen / living area, master bedroom with ensuite shower room, two further bedrooms, family bathroom and a hallway with storage cupboards. The property also offers a parking space.

Ideally located a short walk from both South Quay DLR and Canary Wharf, excellent for commuters requiring easy access in to Central London and surrounding areas.

Duckman Tower offers an array of on-site amenities that include: a 24-hour concierge service, leisure facilities, residents lounge and rooftop terrace.

The development is within easy reach of independent shops, restaurants, cafes and leisure facilities.

## ADDITIONAL INFORMATION

\* Tenure - 999 years from new

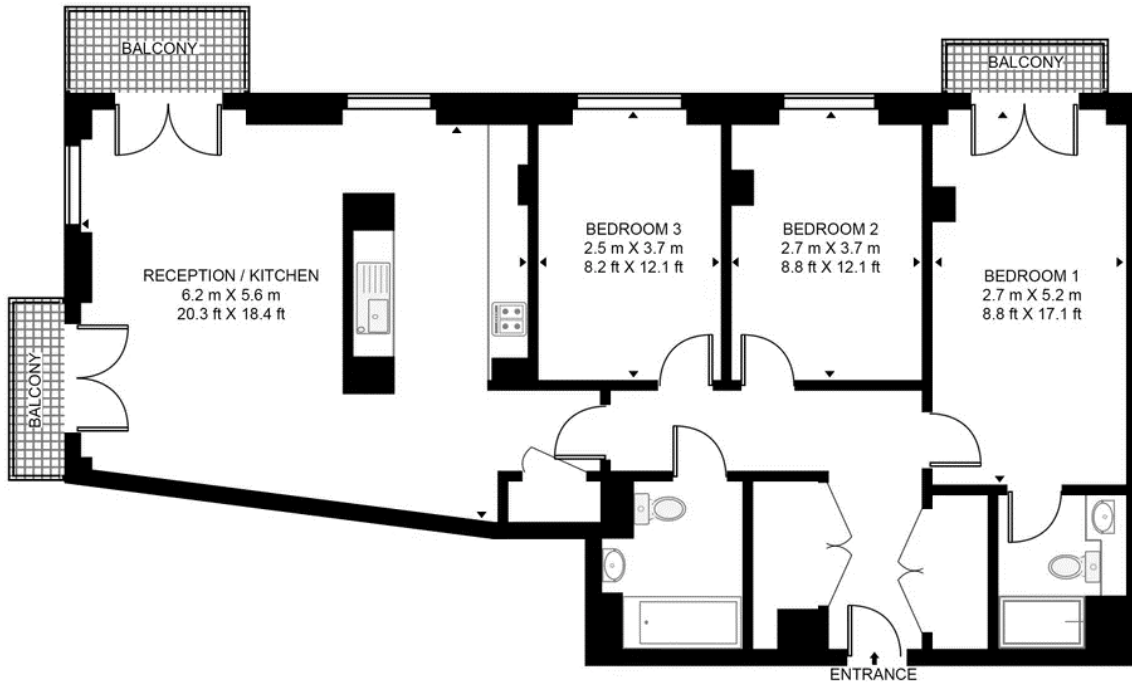
\* Annual Ground Rent - £500 per year

\* Annual Service Charges - estimated £6,000 per year

\* Local Authority - Tower Hamlets

\* Council Tax Band - G

The property would make an ideal first home or buy-to-let investment.



Energy Efficiency Rating			
Score	Energy rating	Current	Potential
92+	A	85   B	85   B
81-91	B		
69-80	C		
55-68	D		
39-54	E		
21-38	F		
1-20	G		

Tel : +442072315656

Email : info@lclproperty.com

Address : The Yellow House, 37 Plough Way, Surrey Quays, London SE16 2LS



### Disclaimer

**Agents Note:** Whilst every care has been taken to prepare these sales particulars, they are for guidance purposes only. All measurements are approximate and are for general guidance purposes only and whilst every care has been taken to ensure their accuracy, they should not be relied upon and potential buyers are advised to recheck the measurements. Purchasers are advised to undertake their own measured survey prior to exchange of contracts.