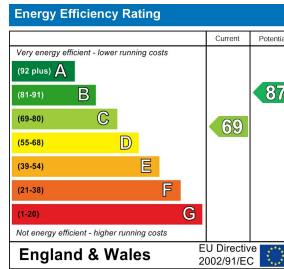
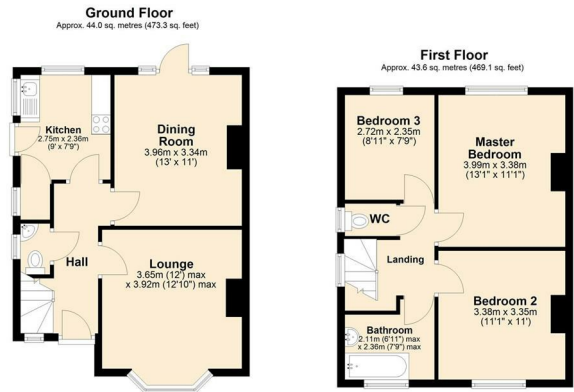


17 | Aurania Avenue | Norwich | NR1 2RD

£1,600 PCM

 **BUTTERFLY** 
SALES, LETTINGS & PROPERTY MANAGEMENT



Description

This charming 1920s three bedroom semi detached house is tucked away in a popular cul de sac just off Trafford Road. The ground floor comprises an entrance hall leading to a bay fronted lounge, a dining room opening onto the garden, a kitchen, and a convenient cloakroom. Upstairs, there are three good sized bedrooms, a family bathroom, and a separate WC off the landing.

Set behind a generous frontage with driveway parking, the property offers access to the rear, where a wooden garage and garden shed are located. The garden is mainly laid to lawn and bordered by mature shrubs and flower beds, creating a peaceful outdoor space. Situated just south of Norwich city centre, the property enjoys excellent access to local amenities, well-regarded schools, Norwich City College, the UEA, N&NUH, and the Norwich Research Park, making it an ideal choice for families.

Key features

- 1920s three bedroom semi detached house
- Entrance hall, bay fronted 12'10 lounge, and downstairs WC
- Three good sized bedrooms, family bathroom, and separate WC off the landing
- Generous frontage with driveway parking leading to the rear garden
- Tucked away in a popular cul-de-sac within a desirable location
- Recently renovated throughout
- Kitchen with separate 13' dining room opening onto the garden
- Double glazed with electric heating throughout
- Wooden garage and garden shed
- Available now

Council Tax Band & Local Authority: C, Norwich
Deposit Required: £1,846

You can also scan the QR code to view the property online. This will take you directly to our website, where you'll find additional photos, detailed floorplan, and all the key information in line with Parts A, B, and C of the Material Information guidance for property listings. You'll also be able to browse our other available properties there.



Butterfly Lettings | 6 Church Lane | Eaton | NR4 6NZ
hello@butterflylettings.co.uk
www.butterflylettings.co.uk
01603 870870



Butterfly Lettings, trading as Butterfly Homes, and its representatives are not authorised to make statements or assurances about the property, whether on their own behalf or on behalf of the client. No responsibility is accepted for any statements contained in these particulars, which do not form part of any offer or contract. We have taken care to ensure that the details provided for each property are accurate at the time of listing. However, the information supplied is intended as a guide only, and we do not obtain confirmation from the seller's legal representative when preparing it. Buyers should verify any leasehold details, charges, or other matters through their own legal representatives. All measurements, areas, and distances are approximate. Fixtures, fittings, and appliances have not been tested, so we cannot guarantee that they are in working order. It should not be assumed that the property has all necessary planning permissions, building regulations, or other consents. We recommend checking the local council's website for information on conservation areas, flood risks, tree preservation orders, planning applications, and other relevant matters. We also advise reviewing the property and surrounding area using Google Maps or Street View before attending a viewing. Photographs are for illustration only and should not be taken as confirmation that any items shown are included in the sale. If any particular detail is important to you, please seek independent professional verification before proceeding. Referral Fees: Butterfly Homes may receive a referral fee from recommended solicitors, mortgage advisers, or other service providers. Any referral arrangement will not affect the cost or quality of the service provided.

We are Butterfly Lettings LTD trading as Butterfly Homes with registered number 15893663 and address C/O Shaw & Co 3 Colegate Norwich Norfolk NR3 1BN