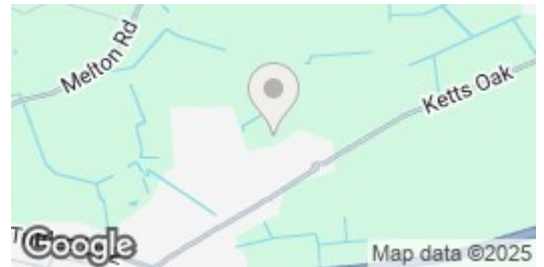
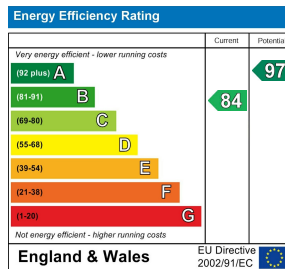
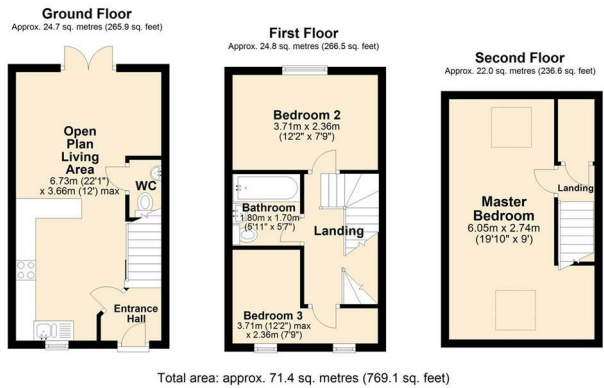




54 | Briggs Mead | Wymondham | NR18 0GB

£1,150 PCM

 **BUTTERFLY** 
SALES, LETTINGS & PROPERTY MANAGEMENT



Description

This three bedroom semi-detached home offers a practical and well arranged living space across three floors, suited to couples or small families. The ground floor features a modern, open plan layout with a contemporary kitchen including an integrated oven, hob and extractor plus breakfast bar, flowing into a lounge area with doors opening to the rear garden. A convenient WC serves this level.

The first floor provides two bedrooms along with a family bathroom fitted with a modern suite and a shower over the bath. The top floor is dedicated to the main bedroom, offering a generous space. The property benefits from two parking spaces at the front and is set within a desirable residential area.

Key features

- Three-bedroom semi detached townhouse
- Contemporary kitchen with integrated oven, hob, and extractor fan
- Three bedrooms across the upper floors
- Enclosed rear garden with patio area
- Popular residential location in Wymondham
- Modern open plan ground floor layout with garden access via patio doors
- Ground floor WC and family bathroom with shower over the bath
- Fitted with gas central heating and double-glazed windows
- Two parking spaces to the front of the property
- Available Now

Council Tax Band & Local Authority: B, South Norfolk
Deposit Required: £1,326

You can also scan the QR code to view the property online. This will take you directly to our website, where you'll find additional photos, detailed floorplan, and all the key information in line with Parts A, B, and C of the Material Information guidance for property listings. You'll also be able to browse our other available properties there.



Butterfly Lettings | 6 Church Lane | Eaton | NR4 6NZ
hello@butterflylettings.co.uk
www.butterflylettings.co.uk
01603 870870



Butterfly Lettings, trading as Butterfly Homes, and its representatives are not authorised to make statements or assurances about the property, whether on their own behalf or on behalf of the client. No responsibility is accepted for any statements contained in these particulars, which do not form part of any offer or contract. We have taken care to ensure that the details provided for each property are accurate at the time of listing. However, the information supplied is intended as a guide only, and we do not obtain confirmation from the seller's legal representative when preparing it. Buyers should verify any leasehold details, charges, or other matters through their own legal representatives. All measurements, areas, and distances are approximate. Fixtures, fittings, and appliances have not been tested, so we cannot guarantee that they are in working order. It should not be assumed that the property has all necessary planning permissions, building regulations, or other consents. We recommend checking the local council's website for information on conservation areas, flood risks, tree preservation orders, planning applications, and other relevant matters. We also advise reviewing the property and surrounding area using Google Maps or Street View before attending a viewing. Photographs are for illustration only and should not be taken as confirmation that any items shown are included in the sale. If any particular detail is important to you, please seek independent professional verification before proceeding. Referral Fees: Butterfly Homes may receive a referral fee from recommended solicitors, mortgage advisers, or other service providers. Any referral arrangement will not affect the cost or quality of the service provided.

We are Butterfly Lettings LTD trading as Butterfly Homes with registered number 15893663 and address C/O Shaw & Co 3 Colegate Norwich Norfolk NR3 1BN