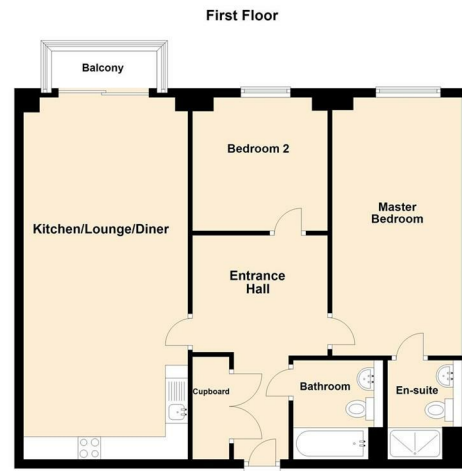




5 | Bridgemaster Court | Norwich | NR1 1XG

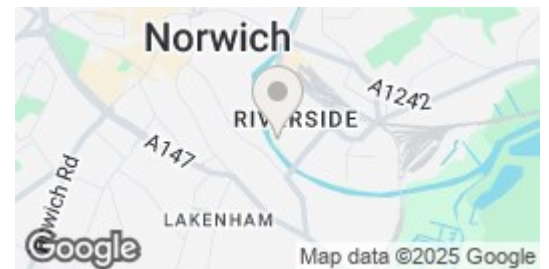
£1,250 PCM

 **BUTTERFLY**   
LETTINGS & PROPERTY MANAGEMENT



Every effort has been made to ensure the accuracy of the floorplan provided. However, measurements of doors, windows, rooms, and other items are approximate, and no responsibility is accepted for any errors, omissions, or inaccuracies. This floorplan is for illustrative purposes only and should be used as such by prospective tenants. The services, systems, and appliances depicted have not been tested, and no guarantee is made regarding their functionality or efficiency. Plan produced using PlotUp.

Energy Efficiency Rating		
	Current	Potential
Very energy efficient - lower running costs		
(92 plus) A		
(81-91) B		
(69-80) C		
(55-68) D		
(39-54) E		
(21-38) F		
(1-20) G		
Not energy efficient - higher running costs		
England & Wales	EU Directive 2002/91/EC	



## Description

This stylish 2 Bedroom first floor apartment offers a fantastic choice for modern city living. The master bedroom includes its own en-suite shower room, while a separate contemporary bathroom serves the rest of the apartment. The spacious open plan living area leads out onto a private balcony with attractive river views, and the sleek, modern kitchen comes complete with integrated appliances.

This well presented apartment also benefits from a secure phone entry system and an allocated on-site parking space. Ideally located within Norwich's sought-after Riverside development, you're just a short walk from the city centre, leisure facilities, and scenic riverside walks. Available from beginning of September 2025, it offers the perfect mix of comfort, convenience, and lifestyle.

## Key features

- Stylish first floor 2 Bedroom apartment in a purpose built block
- Located in the heart of the Riverside development, Norwich
- 2 Double bedrooms, including main bedroom with en-suite
- Open plan living/dining/kitchen area with balcony
- Balcony and rooms offering river views
- Modern kitchen with integrated appliances
- Contemporary bathroom plus additional en-suite shower room
- Secure phone entry system
- Allocated on-site parking space
- Available beginning of September 2025



6 Church Lane  
Eaton, NR4 6NZ

hello@butterflylettings.co.uk

<https://www.butterflylettings.co.uk>

01603 870870

While we have made every effort to ensure that these details provide a fair and accurate representation of the property at the time of listing, they are intended for guidance only. Please be aware that we do not consult with management companies, planning departments, or building control in preparing these details. We strongly recommend that you review the property and its surrounding area on Google Maps and Street View before scheduling a viewing. Note that the photographs do not imply that any depicted items are included, the quoted measurements are approximate, and the fixtures, fittings, and appliances have not been tested, so their functionality cannot be guaranteed. If any specific detail is particularly important to you, we advise seeking professional verification.