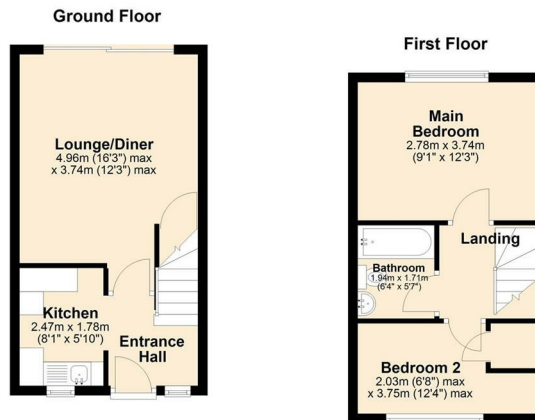




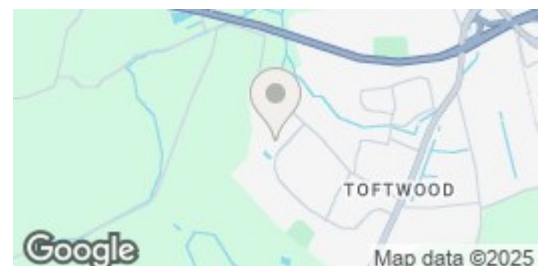
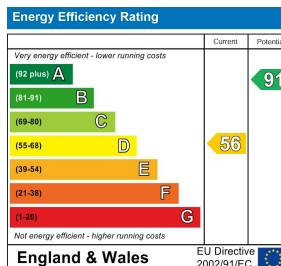
16 | Limassol Road | Dereham | NR19 1XR

£900 Per month

 **BUTTERFLY** 
LETTINGS & PROPERTY MANAGEMENT



Every effort has been made to ensure the accuracy of the floorplan provided. However, measurements of doors, windows, rooms, and other items are approximate, and no responsibility is accepted for any errors, omissions, or inaccuracies. This floorplan is for illustrative purposes only and should be used as such by prospective tenants. The services, systems, and appliances depicted have not been tested, and no guarantee is made regarding their functionality or efficiency.
Plan produced using PlanUp.



Description

This well-presented mid-terraced property is situated in a sought-after residential area. The accommodation includes a spacious lounge/diner with sliding doors leading to the rear garden, a kitchen off the entrance hall, and two first-floor bedrooms. A family bathroom with a 3-piece suite completes the layout. The property also features electric heating and double glazing throughout.

Externally, the property enjoys an enclosed rear garden, largely laid to lawn with mature planting and a patio area. An allocated parking space is provided, alongside additional on-street parking. Ideally located for access to the A47, this property is perfect for professionals or small families.

Key features

- Mid-terraced property in a popular residential location
- 2 first-floor bedrooms, including a 12'4 main bedroom
- Kitchen located off the entrance hall
- Lounge/diner with sliding doors to the rear garden
- First-floor bathroom with a 3-piece suite
- Electric heating and double glazing
- Overlooking recreational green space
- Allocated parking space plus on-street parking
- Rear garden with lawn, patio, and mature planting
- Available from Start to Mid July



6 Church Lane

Eaton, NR4 6NZ

hello@butterflylettings.co.uk

<https://www.butterflylettings.co.uk>

01603 870870

While we have made every effort to ensure that these details provide a fair and accurate representation of the property at the time of listing, they are intended for guidance only. Please be aware that we do not consult with management companies, planning departments, or building control in preparing these details. We strongly recommend that you review the property and its surrounding area on Google Maps and Street View before scheduling a viewing. Note that the photographs do not imply that any depicted items are included, the quoted measurements are approximate, and the fixtures, fittings, and appliances have not been tested, so their functionality cannot be guaranteed. If any specific detail is particularly important to you, we advise seeking professional verification.