



Monks View Harts Close, Teignmouth

Teignmouth

Guide Price £340,000

Monks View Harts Close

Teignmouth, Teignmouth

This individual stunning property, featuring a large garage, is immaculately presented. It offers sweeping views across the town towards Dartmoor and the estuary.

Council Tax band: D

Tenure: Freehold

EPC Energy Efficiency Rating: C

EPC Environmental Impact Rating: C

- Detached House in Elevated Position with views of Teign Estuary, Shaldon, Coombe Valley and rural aspects beyond
- 3 Bedrooms, shower room and bathroom
- Modern fitted kitchen and dining room
- Study and Utility room
- Landscaped Front and Rear Terraced Gardens with rural and river views
- Larger than average sized garage
- Close to local primary and secondary school - IDEAL FAMILY HOME
- NO ONWARD CHAIN - VIEWIING RECOMMENDED





Monks View Harts Close

Teignmouth, Teignmouth

This individual stunning property, featuring a large garage, is immaculately presented. It offers sweeping views across the town towards Dartmoor and the estuary.

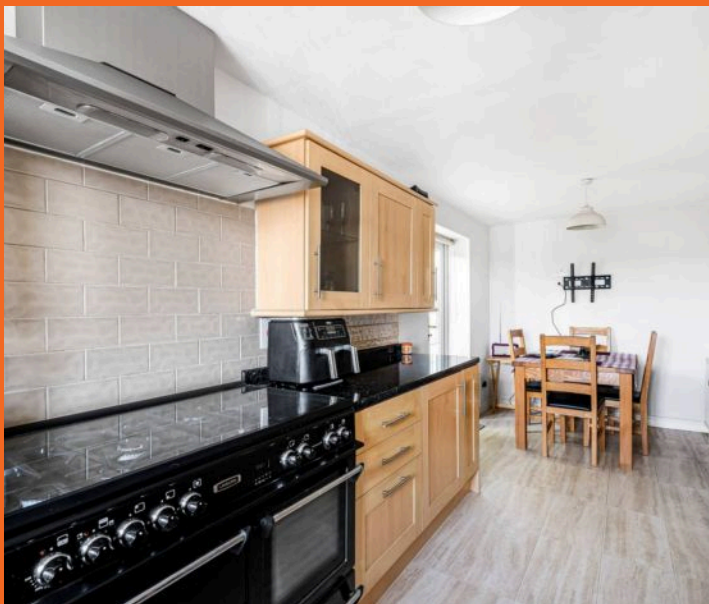
Council Tax band: D

Tenure: Freehold

EPC Energy Efficiency Rating: C

EPC Environmental Impact Rating: C

- Detached House in Elevated Position with views of Teign Estuary, Shaldon, Coombe Valley and rural aspects beyond
- 3 Bedrooms, shower room and bathroom
- Modern fitted kitchen and dining room
- Study and Utility room
- Landscaped Front and Rear Terraced Gardens with rural and river views
- Larger than average sized garage
- Close to local primary and secondary school - IDEAL FAMILY HOME
- NO ONWARD CHAIN - VIEWIING RECOMMENDED





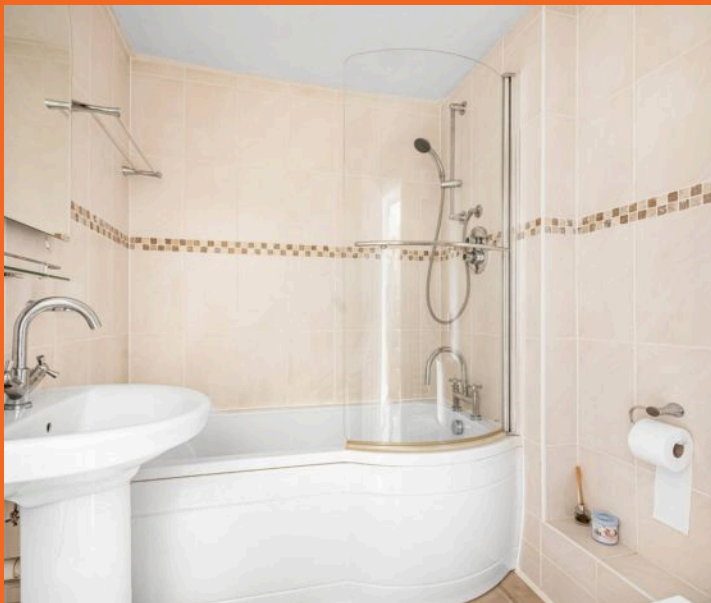
GARDEN

Gardens and sun terrace enjoy rural and estuary views. Affording a south westerly aspect the are ideal for catching the afternoon and evening sun.

GARAGE

Double Garage

Large garage with tandem parking in front



Approximate Gross Internal Area 1095 sq ft - 102 sq m

Ground Floor Area 594 sq ft - 55 sq m

First Floor Area 501 sq ft - 47 sq m

Garage Area 244 sq ft - 23 sq m

(Excluding Garage)



Floor plan produced in accordance with RICS Property Measurement 2nd Edition. Although Pink Plan Ltd ensures the highest level of accuracy, measurements of doors, windows and rooms are approximate and no responsibility is taken for error, omission or misstatement. These plans are for representation purposes only and no guarantee is given on the total square footage of the property within this plan. The figure icon is for initial guidance only and should not be relied on as a basis of valuation.

Nexmove.



Nexmove

Riviera Buildings, 3 Den Road, Devon - TQ14 8AJ

01626 681972 • sales@nexmove.co.uk • www.nexmove.co.uk/