



7 The Mount, Teignmouth

Teignmouth

Guide Price £250,000

7 The Mount

Teignmouth, Teignmouth

Modern three bedroom house located in the highly regarded Easter Side of Teignmouth with sea views and no onward chain

Council Tax band: C

Tenure: Freehold

EPC Energy Efficiency Rating: E

EPC Environmental Impact Rating: F

- Modern three bedroom house located on the highly sought after Easter Side of Teignmouth
- Sea and rural views and no onward chain
- Requires some modernisation and priced to reflect – excellent scope to improve
- Kitchen and dining room
- Living room overlooking rear gardens
- Family bathroom, gardens to front and rear
- Excellent potential internal viewing strongly recommended
- Larger than average single garage





7 The Mount

Teignmouth, Teignmouth

Modern three bedroom house located in the highly regarded Easter Side of Teignmouth with sea views and no onward chain
Council Tax band: C

Tenure: Freehold

EPC Energy Efficiency Rating: E

EPC Environmental Impact Rating: F

- Modern three bedroom house located on the highly sought after Easter Side of Teignmouth
- Sea and rural views and no onward chain
- Requires some modernisation and priced to reflect – excellent scope to improve
- Kitchen and dining room
- Living room overlooking rear gardens
- Family bathroom, gardens to front and rear
- Excellent potential internal viewing strongly recommended
- Larger than average single garage





GARDEN

Outside: The property is approached via a pedestrian walkway. Access to number 7 is provided by a pathway through the front gardens, which feature gently sloping lawns with mature hedgerow borders and inset flower beds, as well as an outside water tap and courtesy lighting. At the rear of the property, which can be accessed through the main reception area, there is a sun deck immediately accessible from the patio doors, along with corresponding seating. A pathway leads through the gardens, which include gravelled flower beds and a raised paved patio/seating area. The main garden is well-stocked with a variety of shrubs and evergreens.

ON STREET

1 Parking Space

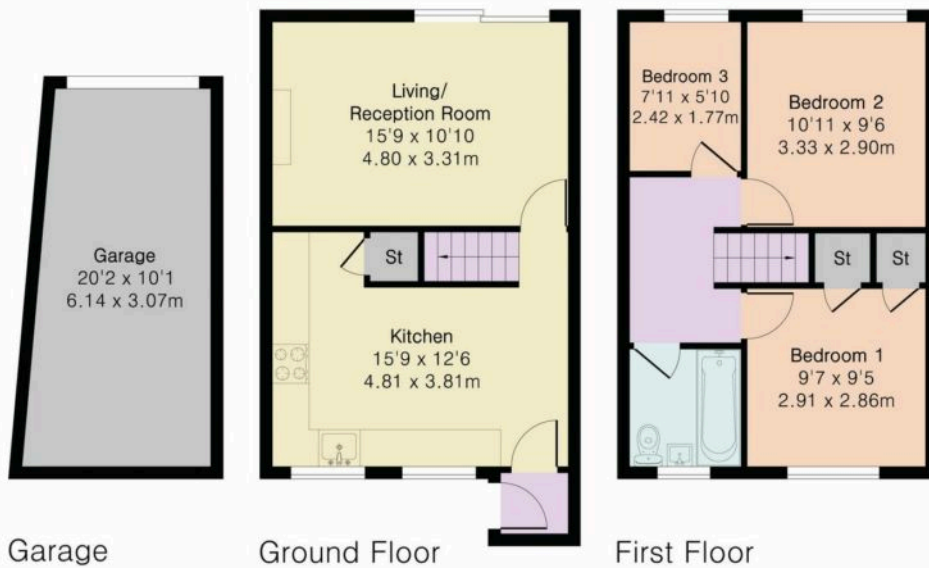


Approximate Gross Internal Area 946 sq ft - 88 sq m

Ground Floor Area 387 sq ft – 36 sq m

First Floor Area 374 sq ft – 35 sq m

Garage Area 185 sq ft – 17 sq m



Although Pink Plan Ltd ensures the highest level of accuracy, measurements of doors, windows and rooms are approximate and no responsibility is taken for error, omission or misstatement. These plans are for representation purposes only as defined by RICS code of measuring practise. No guarantee is given on total square footage of the property within this plan. The figure icon is for initial guidance only and should not be relied on as a basis of valuation.



Nexmove.



Nexmove

Riviera Buildings, 3 Den Road, Devon - TQ14 8AJ

01626 681972 • sales@nexmove.co.uk • www.nexmove.co.uk/