



1 Meadow View Newton Road, Bishopsteignton

Teignmouth

Guide Price £120,000

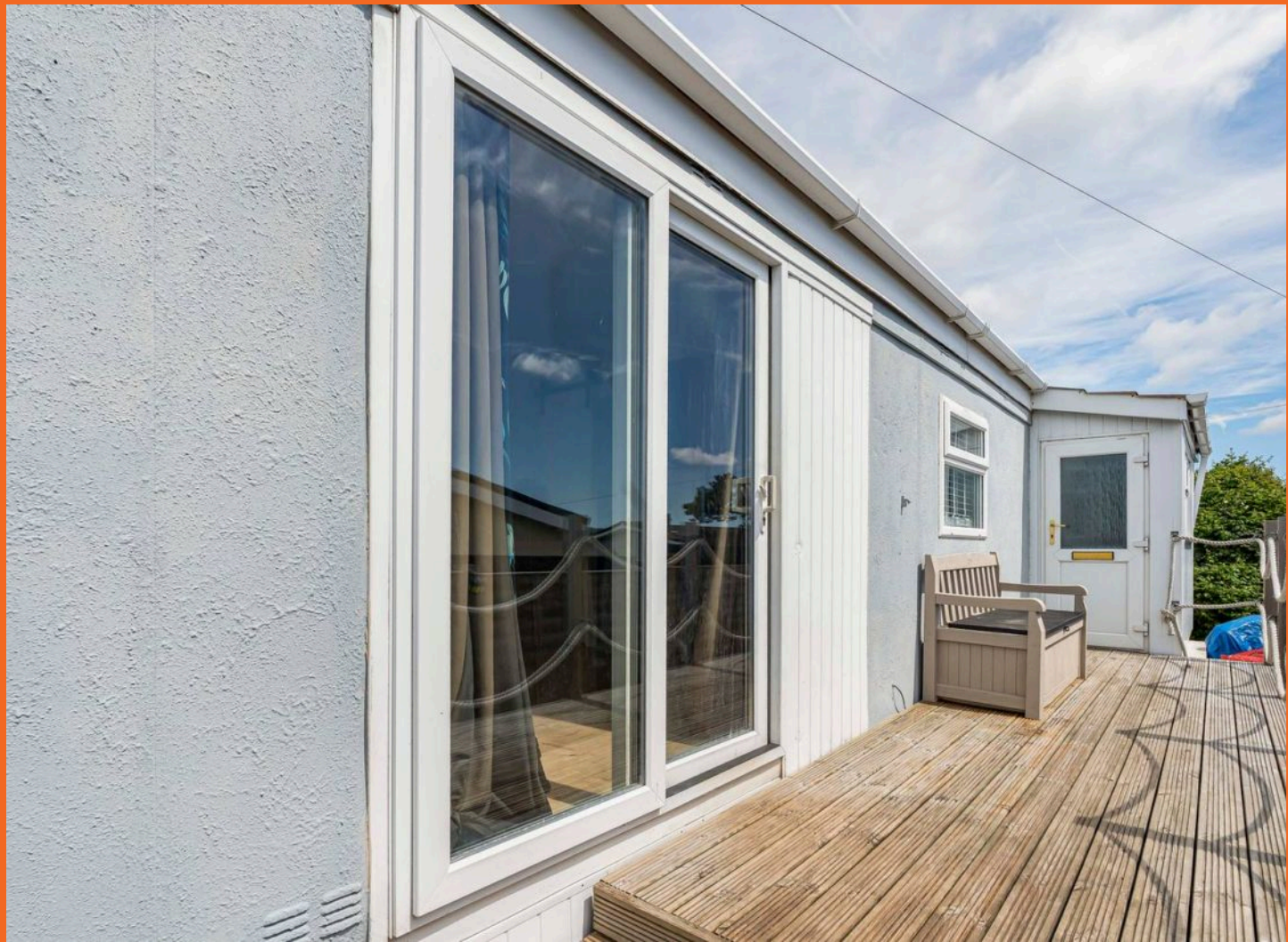
1 Meadow View Newton Road

Bishopsteignton, Teignmouth

Council Tax band: A

Tenure: Leasehold

- Detached park home with Estuary views
- 2 bedrooms
- Modern kitchen and bathroom
- Off road parking
- Front, side and rear gardens





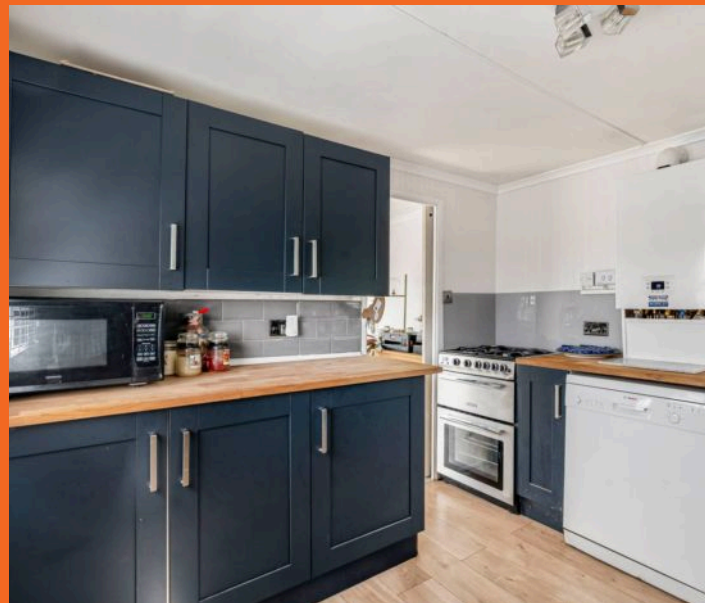
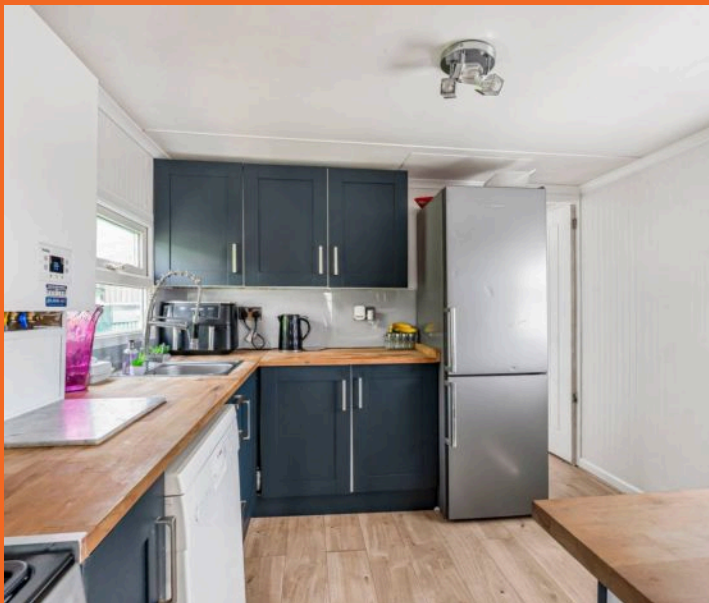
1 Meadow View Newton Road

Bishopsteignton, Teignmouth

Council Tax band: A

Tenure: Leasehold

- Detached park home with Estuary views
- 2 bedrooms
- Modern kitchen and bathroom
- Off road parking
- Front, side and rear gardens





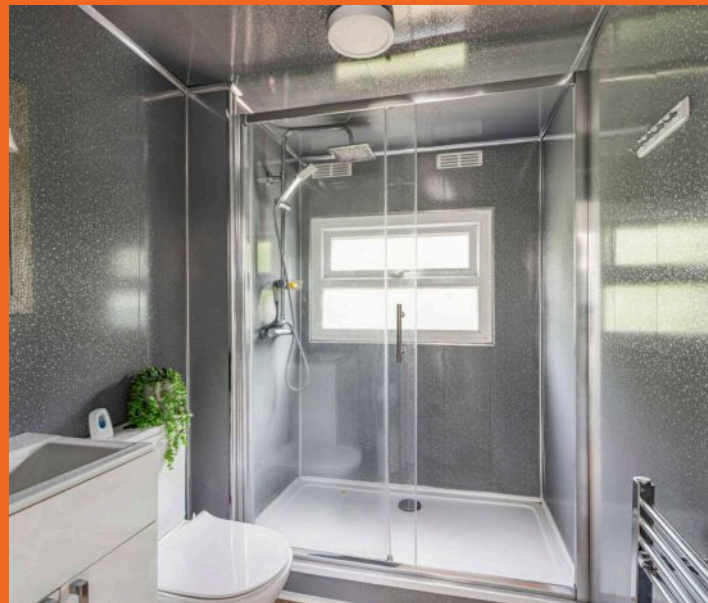
GARDEN

To the front of the property is decking and enjoys estuary views. The garden extends around the rear of the property to the side and is laid mainly to lawn with 2 sheds for storage. The garden is also enclosed so makes it suitable for children and pets.

ALLOCATED PARKING

1 Parking Space

Outside the front gate is a private parking space and there are further visitors parking spaces available at the entrance to the park.



Approximate Gross Internal Area 446 sq ft - 41 sq m



Although Pink Plan Ltd ensures the highest level of accuracy, measurements of doors, windows and rooms are approximate and no responsibility is taken for error, omission or misstatement. These plans are for representation purposes only as defined by RICS code of measuring practise. No guarantee is given on total square footage of the property within this plan. The figure icon is for initial guidance only and should not be relied on as a basis of valuation.



Nexmove.



Nexmove

Riviera Buildings, 3 Den Road, Devon - TQ14 8AJ

01626 681972 • sales@nexmove.co.uk • www.nexmove.co.uk/