



28 The Mount, Teignmouth – TQ14 8NZ

Teignmouth

Guide Price **£290,000**



28 The Mount

Teignmouth, Teignmouth

Entrance Lobby

1.17m x 1.12m (3' 10" x 3' 8")

Meter cupboard housing consumer unit, coat hanging, ceiling lights, multi paned frosted door leading to ...**Living room**

Full height uPVC sealed unit double glazed window affording fabulous views across the town to the sea, further uPVC window with the same view. Night storage heater, door to ...

Inner Hallway

Stairs to the first floor landing, further multi paned door to **Kitchen/Dining Room**

Fitted with a modern range of units comprising granite effect work surface with inset one and a half bowl enamel sink unit with fitted mixer spray tap, base unit below, inset induction hob with extractor fan above and glass splashback.

Further complementing base and eye level units, tall unit housing double oven and grill, solid oak flooring, night storage heater, downlights.

Folding door to handy understairs utility cupboard with plumbing for washing machine, shelving, power points. French doors leading out onto the garden. Utility area

Bedroom One uPVC window affording fabulous view over the town and out to sea. Built-in airing cupboard with pre-lagged cylinder, fitted immersion heater and ample slatted shelving, adjacent built-in cupboard with hanging rail and shelving. Slimline electric wall heater **Bedroom**

Two

uPVC window overlooking the rear garden. Slimline wall heater, two built-in double wardrobe cupboards with hanging rails, further



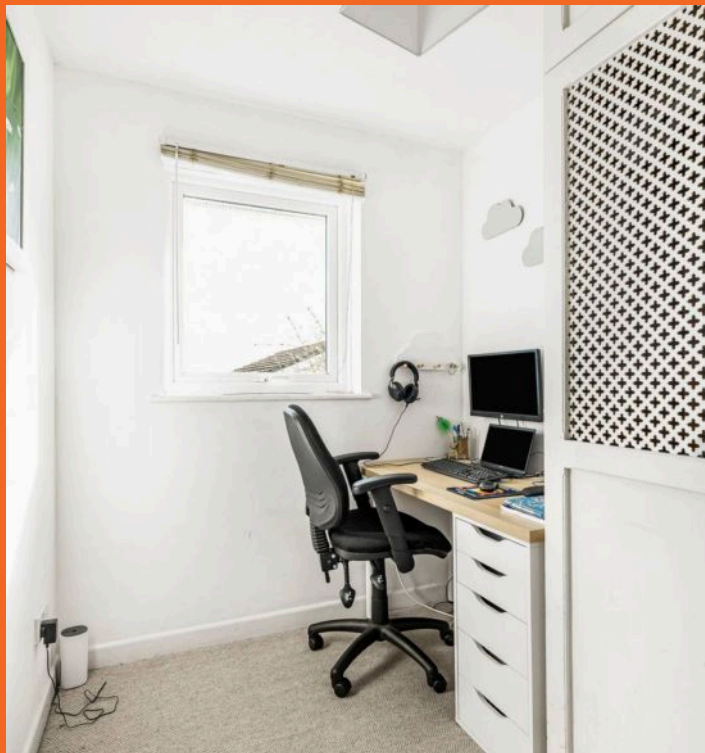


uPVC window overlooking the rear garden. Slimline wall heater, two built-in double wardrobe cupboards with hanging rails, further cupboards above. **Bedroom Three** uPVC window overlooking the front affording sea views. Built-in double cupboard, further cupboards above. **Shower Room** Modern suite comprising double width shower cubicle with power shower, hand shower attachment and monsoon shower head, close coupled WC, pedestal wash hand basin. Half tiled walls, frosted uPVC window. Chrome heated towel rail.

Teignbridge District Council Tax Band: C

Mains Services - Electric & Water

Tenure - Freehold



GARDEN

GARAGE

Single Garage



Approximate Gross Internal Area 881 sq ft - 82 sq m

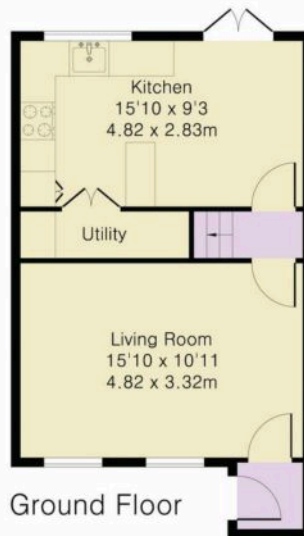
Ground Floor Area 384 sq ft – 36 sq m

First Floor Area 369 sq ft – 34 sq m

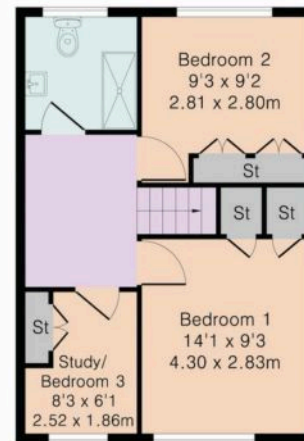
Garage Area 128 sq ft – 12 sq m



Garage



Ground Floor



First Floor



Although Pink Plan Ltd ensures the highest level of accuracy, measurements of doors, windows and rooms are approximate and no responsibility is taken for error, omission or misstatement. These plans are for representation purposes only as defined by RICS code of measuring practise. No guarantee is given on total square footage of the property within this plan. The figure icon is for initial guidance only and should not be relied on as a basis of valuation.



Nexmove.



Nexmove

Riviera Buildings, 3 Den Road, Devon - TQ14 8AJ

01626 681972

sales@nexmove.co.uk

www.nexmove.co.uk/