



Cullum Road, Wheatley, Oxford, OX33 1XD

£475,000

2 1 1



Property Description:

This individually designed bungalow offers a modern, low-maintenance lifestyle in the heart of Wheatley.

The centrepiece of the home is an impressive open-plan kitchen, dining, and living space, featuring vaulted ceilings that flood the room with natural light and create a true sense of character. The layout provides ample space for modern appliances, dining, and a comfortable lounge area, making it ideal for both everyday living and entertaining.

The principal bedroom is a good-sized double, while the second bedroom offers flexibility as a guest room, home office, or hobby space. A contemporary bathroom with stylish tiling and quality fittings completes the internal accommodation. With advanced insulation, energy-efficient glazing, and PV solar panels, the property has been designed with sustainability and cost efficiency in mind.

Externally, the home benefits from a private entrance, private driveway parking, and its own garden space to be landscaped. Buyers also have the option to commission a full landscaping plan or add a bespoke garden room (both at additional cost), perfect for creating a tailored retreat.

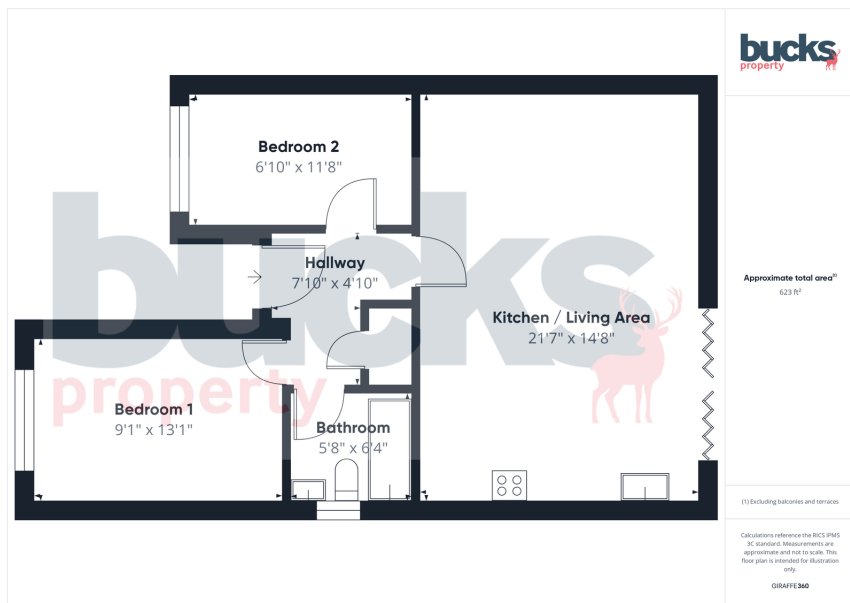
Nearby Schools:

Wheatley and the surrounding villages are home to a wide choice of nurseries, primary schools, and secondary schools. Oxford's independent schools and the city's world-renowned universities are also within easy reach, adding further appeal for families.

What We Love:

This home offers something rarely seen on the market: a one-off architect-designed bungalow that is as practical as it is stylish. The vaulted ceilings give a wonderful sense of space, while the energy-efficient design ensures modern comfort. The ability to walk into the village, hop on a bus to Oxford, and tailor the garden to your lifestyle makes this property a true hidden gem in Wheatley.





- Architect-designed, one-off bungalow.
- Striking vaulted ceilings in the main living area.
- Contemporary bathroom with stylish finishes.
- Private garden space with landscaping options (extra cost).
- Fairly level walk to Wheatley village centre.
- Single storey living with approx. 61 SQM (656 SQFT).
- Two bedrooms - both at the front of the property.
- Energy-efficient design with PV solar panels.
- Large driveway for 3+ vehicles.
- Excellent local bus routes to Oxford and surrounding areas.



bucksproperty.co.uk



1 Meadow Cottages | Little Kingshill | Great Missenden | Buckinghamshire | HP16 0DX
t. 07780 755590 | e. sales@bucksproperty.co.uk
Bucks Property Services Ltd Registered Number: 14869929

