






Wycombe Road, Saunderton, High Wycombe, Buckinghamshire, HP14 4EA

Guide Price £335,000

 2  2  1



Property Description:

This stylish first-floor apartment sits in a cool art-deco inspired building, with all windows looking out onto a peaceful central courtyard. Step inside and you're greeted by a spacious hallway that flows into two generous bedrooms, a sleek main bathroom, and a bright open-plan living space.

The main bedroom is a great size and comes with a modern en-suite shower room. The second bedroom is equally roomy and looks out over the courtyard—ideal for guests, a home office or housemate. The open-plan kitchen and lounge area is modern, social, and perfect for entertaining. The kitchen includes Bosch appliances—dishwasher, washer/dryer, fridge freezer, oven, hob - and even a wine fridge, all topped off with smooth quartz worktops.

The apartment is tucked away at the rear of the building, with easy access and a layout that works perfectly for couples, remote workers, or sharers. You'll also have access to a free on-site gym, beautifully kept communal gardens, and two lifts in the building (please note, ramps are needed at the main entrance).

Overview:

Set in eight acres of leafy grounds, this development offers a mix of countryside calm and city connection. From Saunderton Station (just 0.1 mile away), you can hop on a direct train and be in London Marylebone in just 47 minutes.

There's a peaceful inner courtyard at the heart of the development - a great spot to relax or work outside on sunny days. The building itself has serious character: originally built in the 1950s for a pharmaceutical company, it once housed some of the UK's top scientists. Today, it's been reimagined as a stylish collection of modern homes, keeping its original charm but adding a fresh, contemporary twist.

Nearby Attractions:

Saunderton Station – 0.1 mile

High Wycombe – 5.2 miles

Princes Risborough – 4.1 miles

Thame – 11 miles

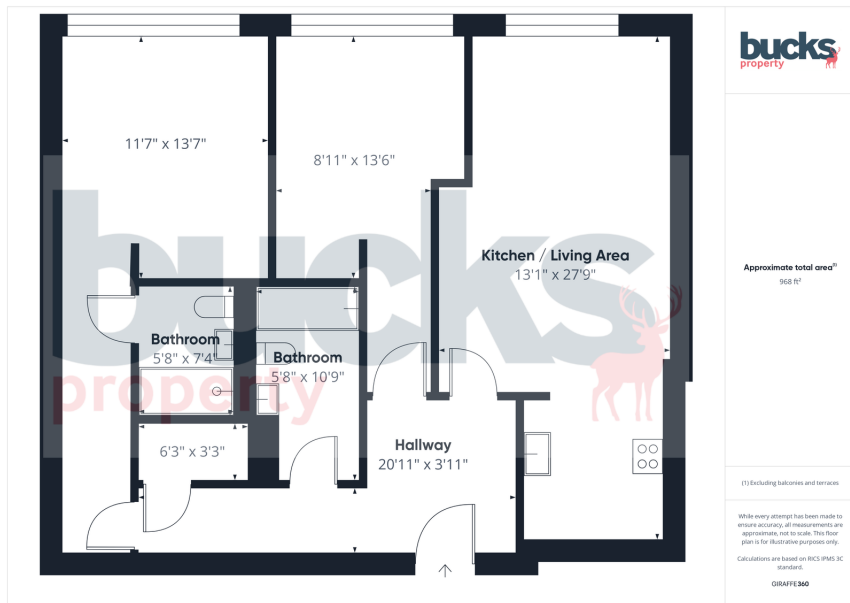
Hell-Fire Caves, West Wycombe – 3.1 miles

Local village pub (just a short walk away) – 0.1 mile

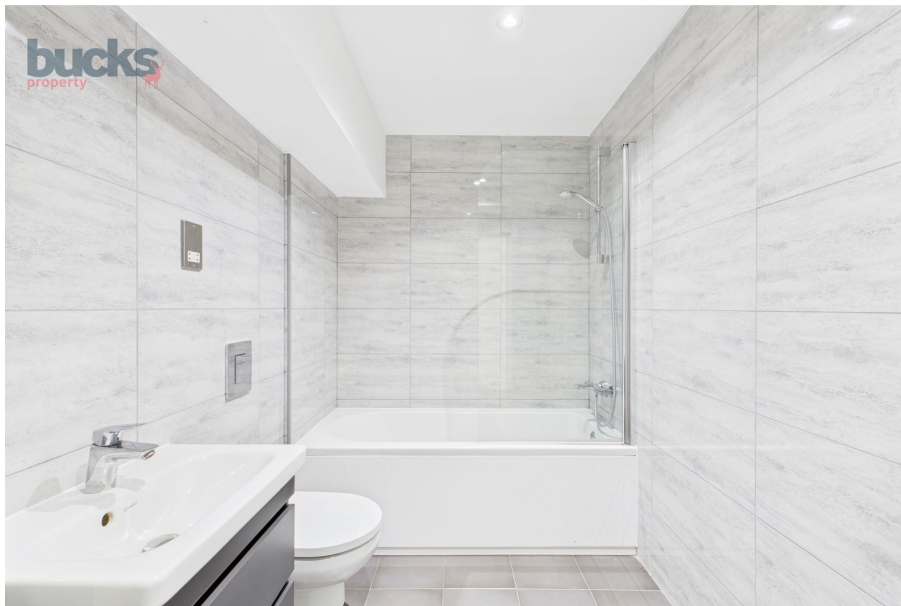
What we love:

We love the big windows and chilled courtyard views - it makes the whole place feel light and airy. The layout just works: ideal for anyone wanting space to live, work, and unwind. The kitchen's compact but packed with everything you need (yes, including a wine fridge), and the laundry cupboard keeps your stuff out of sight. It's seriously good value for money - and the free gym is a brilliant bonus.





- Stylish two-bedroom apartment in an Art-Deco inspired development
- First-floor position with views over the central courtyard
- Spacious open-plan kitchen and living area – ideal for entertaining
- Modern kitchen with Bosch appliances, quartz worktops, and wine fridge
- Main bedroom with generous en-suite shower room
- Second double bedroom with peaceful outlook onto landscaped grounds
- Beautifully maintained communal gardens and inner courtyard
- Free on-site gym for residents and lift access to all floors
- Just 0.1 mile from Saunderton Station – 47 mins to London Marylebone
- Set within 8 acres of Chiltern countryside, perfect for a peaceful lifestyle



bucksproperty.co.uk



1 Meadow Cottages | Little Kingshill | Great Missenden | Buckinghamshire | HP16 0DX
t. 07780 755590 | e. sales@bucksproperty.co.uk
Bucks Property Services Ltd Registered Number: 14869929

rightmove

B+hive

PRS

Inventory Hive

OnTheMarket