





Four Ashes Road, Cryers Hill, High Wycombe, Buckinghamshire, HP15 6DY

£250,000

1 1 1



### Property Description:

*This sophisticated one-bedroom ground-floor apartment is set within the East Wing of a prestigious South Buckinghamshire development, surrounded by picturesque natural beauty. Designed to an exceptional standard, the apartment features striking windows that bathe the interiors in natural light, creating a warm and inviting atmosphere.*

*The private entrance leads into a sleek, Italian-inspired kitchen with quartz countertops, generous storage, and integrated appliances. The open-plan living area is bright and spacious, with wide patio doors opening onto beautifully landscaped gardens—seamlessly blending indoor and outdoor living.*

*The well-appointed bedroom offers patio views, enhanced by large feature windows that flood the space with light. A stylishly designed main bathroom, complete with high-end fittings, completes the apartment.*

### The Development:

*This remarkable Grade II listed conversion was originally a grand country home dating back to 1859. The property features Palladian-inspired extensions by renowned architect Edward Cullinan, effortlessly combining historic charm with modern luxury. Transformed by acclaimed Italian firm Area Equity—known for their high-end residential and tourism projects across Europe—this collection of exclusive apartments and maisonettes offers a refined and sophisticated living experience.*

*Set within a secure, gated complex with CCTV and allocated parking, the development exudes exclusivity and tranquillity. With its boutique retreat ambiance, impeccable design, and breathtaking surroundings, this property is a must-see.*

### Nearby Attractions:

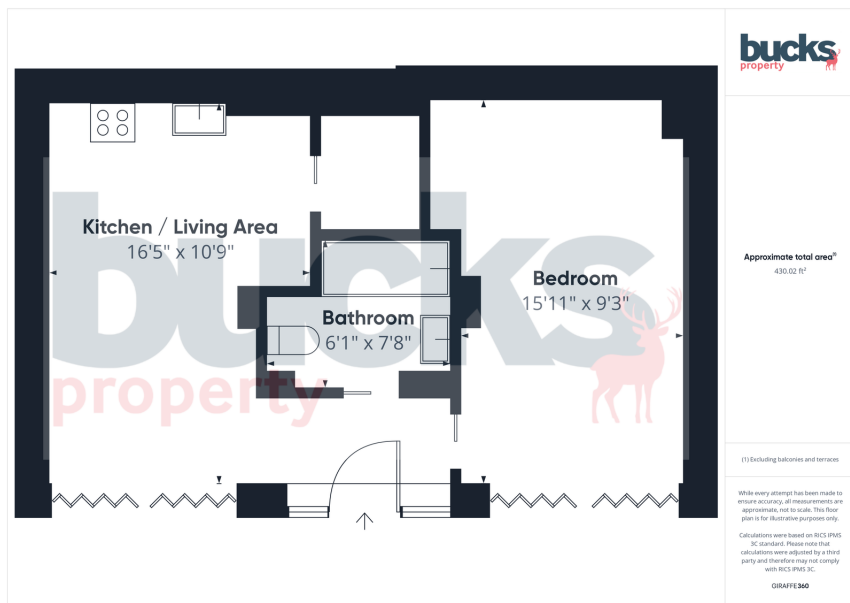
High Wycombe Train Station – 2.6 miles  
Great Missenden Train Station – 4.8 miles  
Hughenden Manor (National Trust) – 2.3 miles  
Village shop/pub (walking distance) – 0.5 miles  
Roald Dahl Museum & Great Missenden village – 4.7 miles  
Hazlemere Village Shops (Costa, Butchers, Chip Shop, Co-op) – 1.8 miles  
High Wycombe Town Centre – 2.7 miles  
Amersham – 7.7 miles

### What We Love:

*At Bucks Property, we've been involved with this development since its very first phase and continue to manage the site today. Our in-depth knowledge of the property's history, construction, and community allows us to offer unparalleled insight. We love the peaceful surroundings, the exceptional quality of the finishes, and the stunning views over Hughenden Valley from the entrance area. The private south-facing garden of this apartment is perfect for entertaining or simply soaking up the sun.*







- Prime Location: Set in the West Wing of an exclusive South Buckinghamshire development, surrounded by nature.
- Modern Kitchen: Quartz countertops, ample storage, and integrated appliances.
- Bright Bedroom: Large windows overlooking gardens.
- Historic Charm: Built within the grounds of a Grade II Listed country house in a unique setting.
- Excellent Transport: Train, tube, and motorways nearby.
- Elegant Design: Floor-to-ceiling windows and private patio access.
- Modern Living: Open-plan living room/kitchen.
- Luxury Bathroom: Italian marble and high-quality bathroom suite.
- Secure Complex: Gated with CCTV, parking, and a boutique feel.
- Bring your friends: Pets welcome.



[bucksproperty.co.uk](https://bucksproperty.co.uk)



1 Meadow Cottages | Little Kingshill | Great Missenden | Buckinghamshire | HP16 0DX  
t. 07780 755590 | e. sales@bucksproperty.co.uk  
Bucks Property Services Ltd Registered Number: 14869929

rightmove

B+hive

PRS

Inventory Hive

OnTheMarket