



Saunderton Estate, Flat 18 The Residence, Wycombe Road, Saunderton

Guide Price £335,000

🛏 2 🪑 2 🛋 1



Property Description:

This lovely apartment is situated on the ground-floor of this art-deco inspired building, with all windows facing the communal courtyard. As you enter the apartment, you will find a large hallway - leading to the two bedrooms, main bathroom and kitchen/living area. The main bedroom is of good size, and enjoys a spacious ensuite shower-room. The second bedroom is equally spacious and has views over the courtyard. The kitchen and living area are open-plan and modern in design. The kitchen enjoys Bosch appliances (dishwasher, washer/dryer, fridge freezer, cooker and hob) and quartz worktops. The kitchen even has a wine fridge!

Accessed from the rear entrance, this apartment is perfectly located and offers ample space for a couple or young family. The development is set in lovely grounds and enjoys a small but well-equipped gym - free for all residents to use. The development includes two lifts for ease of access, although ramps are needed to enter the building.

Overview:

Located on 8 acres of landscaped communal grounds, this development offers a peaceful setting in the Chiltern countryside. Despite its rural feel, it is only a 47-minute train ride to Marylebone from the nearby Saunderton Train Station.

The development features an inner courtyard, providing a quiet space for residents to relax. The building has an interesting history, first constructed between 1955 and 1958 for a pharmaceutical company. It originally housed leading scientists of the time.

Today, the building has been transformed into modern living spaces while keeping its unique art-deco style. This development is perfect for those who want a home with character, convenience, and a touch of nature.

Nearby Attractions:

Saunderton Station = 0.1 mile

High Wycombe = 5.2 miles

Princes Risborough = 4.1 miles

Thame = 11 miles

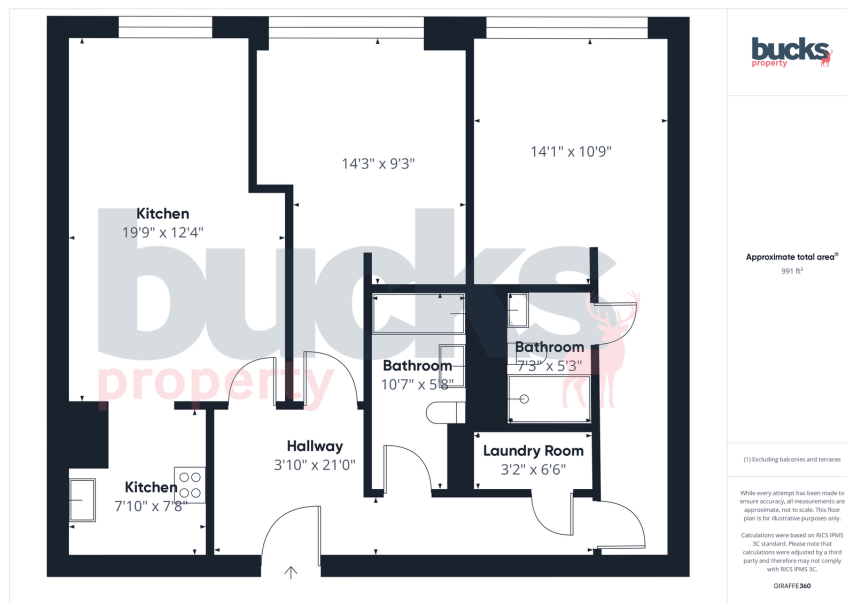
Hell-Fire Caves - West Wycombe = 3.1 miles

Village pub (walk) = 0.1 miles

What we love:

We love the large windows and views into the courtyard that this property enjoys - see the photos for evidence! The apartment is large and would suit a couple, perhaps a home-worker, or even sharers. The kitchen is compact but has everything that you would need - and the airing cupboard, with washer/drier keeps your laundry separate. Exceptional value for money - and a gym thrown in to boot!





- **Ground-Floor Location:** Situated in an art-deco inspired building with all windows facing the tranquil communal courtyard.
- **Primary Bedroom:** Generously sized with an ensuite shower room for added comfort.
- **Modern Kitchen:** Features Bosch appliances, quartz worktops, and even a wine fridge for added luxury.
- **Secure Access:** Rear entrance offers added privacy and easy access for couples or young families.
- **Excellent Connectivity:** Just a 47-minute train ride to Marylebone from nearby Saunderton Train Station.
- **Spacious Layout:** Large hallway leads to two bedrooms, a main bathroom, and an open-plan kitchen/living area.
- **Second Bedroom:** Equally spacious with views over the serene communal courtyard.
- **Resident Amenities:** Access to a small, well-equipped gym free for residents and two lifts for convenience.
- **Chiltern Countryside Setting:** Located on 8 acres of landscaped grounds for peaceful rural living.
- **Historical Charm:** Originally built for a pharmaceutical company in the 1950s and now reimagined with a modern art-deco twist.



bucksproperty.co.uk



1 Meadow Cottages | Little Kingshill | Great Missenden | Buckinghamshire | HP16 0DX
t. 07780 755590 | e. sales@bucksproperty.co.uk
Bucks Property Services Ltd Registered Number: 14869929

