

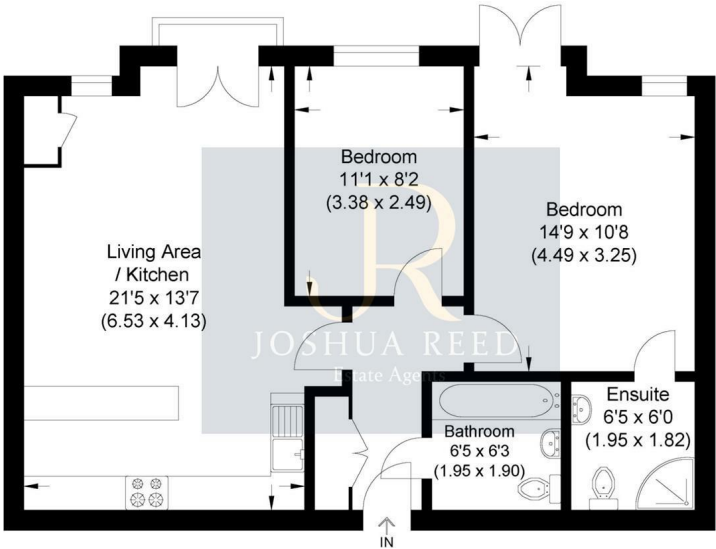
2 Bed Apartment  
located in

**JR**  
JOSHUA REED  
Estate Agents

11 Railway View  
Ware  
SG12 9JR



Approximate Gross Internal Area  
62.88 sq m / 676.83 sq ft



Second Floor

Illustration for identification purposes only, measurements are approximate, not to scale.

£1,700

CONTACT

23-27 Maidenhead Street  
Hertford  
Hertfordshire  
SG14 1DW

EMAIL

josh@joshua-reed.co.uk

TELEPHONE

01992 917388

www.joshua-reed.co.uk

SUMMARY

An immaculate two bedroom, two bathroom modern apartment situated just a short walk away from Ware High Street and Train Station servicing Tottenham Hale and London Liverpool Street. Accommodation features open plan lounge/diner with Juliet balcony over looking the New River, fitted kitchen with white goods, good size master bedroom with Juliet balcony, ensuite shower room, second bedroom, modern bathroom, secure entry phone system and allocated parking space.

Book a viewing and arrange the rental of your new property.

DIRECTIONS

