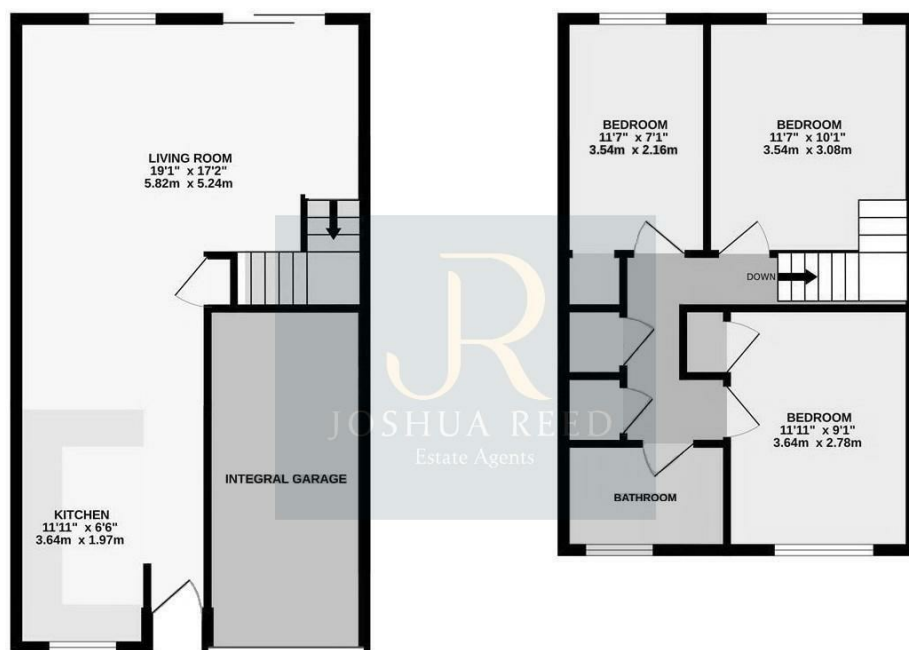


**3 Bed House - Mid Terrace
located in Hertford Heath**

JR
JOSHUA REED
Estate Agents

22 Heathgate Hertford Heath SG13 7PH



Whilst every attempt has been made to ensure the accuracy of the floorplan contained here, measurements of doors, windows, rooms and any other items are approximate and no responsibility is taken for any error, omission or mis-statement. This plan is for illustrative purposes only and should be used as such by any prospective purchaser. The services, systems and appliances shown have not been tested and no guarantee as to their operability or efficiency can be given.

£2,200 Per month

CONTACT

23-27 Maidenhead Street
Hertford
Hertfordshire
SG14 1DW

EMAIL

josh@joshua-reed.co.uk

TELEPHONE

01992 917388

www.joshua-reed.co.uk

SUMMARY

A three bedroom house to let in the popular location of Hertford Heath walking distance to local shop, pubs and approx. two miles to Hertford East Train Station. The accommodation features a spacious lounge/diner, open plan kitchen with breakfast bar and integrated appliances, three bedrooms and modern bathroom.

Nice size rear garden, off street parking to driveway and garage.

Book your viewing today.

DIRECTIONS

