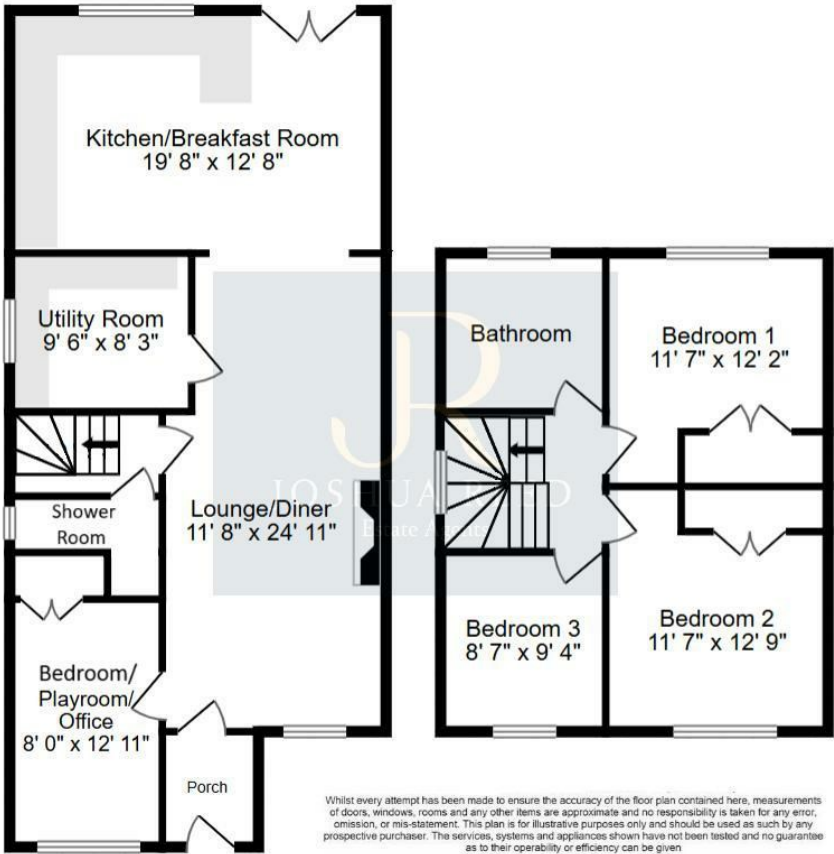


3 Bed House - Semi-Detached
located in

JR
JOSHUA REED
 Estate Agents

27 Danemead
Hoddesdon
EN11 9LU



£599,995

CONTACT

23-27 Maidenhead Street
Hertford
Hertfordshire
SG14 1DW

EMAIL

josh@joshua-reed.co.uk

TELEPHONE

01992 917388

www.joshua-reed.co.uk

SUMMARY

A fully renovated and extended three/four bedroom semi detached family home situated on this popular residential development within walking distance to local amenities and excellent schools. The fantastic ground floor accommodation features a 25ft lounge/diner with built in media wall, stunning extended kitchen with brand new appliances and electric skylights, utility room, playroom/office/fourth bedroom and downstairs modern shower room.

To the first floor are three good size double bedrooms, two of which with fitted wardrobes and luxury four piece suite family bathroom.

Externally the rear garden has been beautifully landscaped to patio and astro turf with side access and a very useful garden room with power and light, perfect for a home office/studio. Security cameras to front and back with off street parking to driveway.

A stunning, family home where virtually everything in the property is brand new! To be sold CHAIN FREE.

DIRECTIONS

