




1 Bed Maisonette
located in

R
JOSHUA REED
Estate Agents

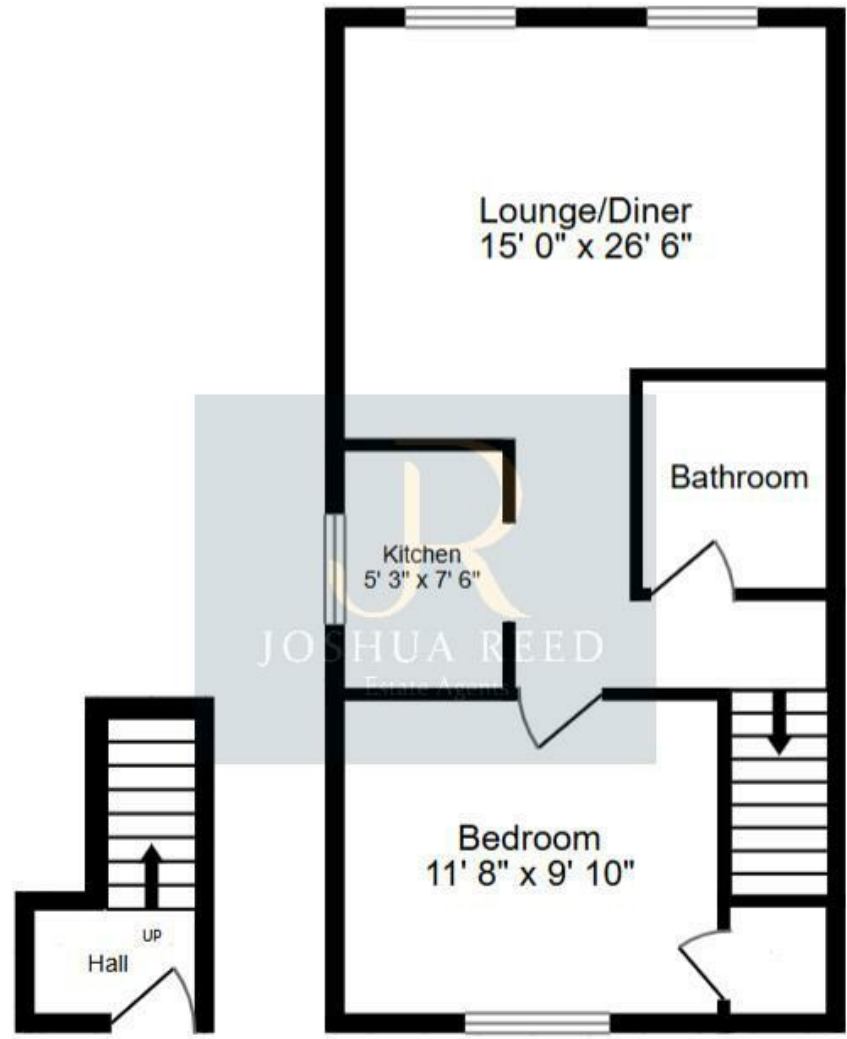
19 Robertson Close
Broxbourne
EN10 6AY

 1

 1

 1

 D



Whilst every attempt has been made to ensure the accuracy of the floor plan contained here, measurements of doors, windows, rooms and any other items are approximate and no responsibility is taken for any error, omission, or mis-statement. This plan is for illustrative purposes only and should be used as such by any prospective purchaser. The services, systems and appliances shown have not been tested and no guarantee as to their operability or efficiency can be given

Offers in the region of
£239,995
CONTACT

23-27 Maidenhead Street
Hertford
Hertfordshire
SG14 1DW

EMAIL

josh@joshua-reed.co.uk

TELEPHONE

01992 917388

www.joshua-reed.co.uk

SUMMARY

A beautifully presented first floor maisonette that boasts a re-fitted modern kitchen with integrated appliances, lounge/diner, large double bedroom, luxury bathroom, own loft space, extended lease, no service charges and allocated parking. The property is ideally located on this popular residential turning close to local amenities and within easy access to Brookfield Farm Shopping Centre, A10 & M25. An ideal first time or investment purchase.

Available for viewing.

DIRECTIONS

