



4 Bed House - Semi-Detached
located in

JR
JOSHUA REED
Estate Agents

47 Baldock Street
Ware
SG12 9DH



4



2



2



£699,995

CONTACT

23-27 Maidenhead Street
Hertford
Hertfordshire
SG14 1DW

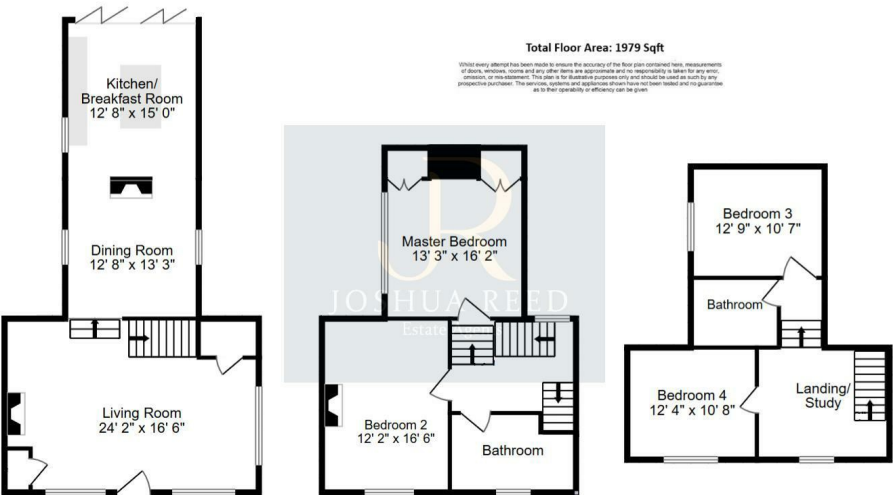
EMAIL

josh@joshua-reed.co.uk

TELEPHONE

01992 917388

www.joshua-reed.co.uk



SUMMARY

A truly sensational and rarely available four bedroom house situated just off Ware High Street, that has been meticulously renovated and restored throughout. The property has a stunning blend of Grade II listed features with a modern finish to include fully integrated luxury kitchen with Quartz work tops, and free standing American style fridge/freezer and bi-fold doors onto the garden, dining room, spacious living room with feature wood burner fireplace.

The first floor includes two excellent size double bedrooms and luxury four piece bathroom. The second floor consists of two further bedrooms and luxury three piece bathroom suite. Externally you have a private and enclosed rear garden with paved patio, astro turf lawn, new fencing and rear access.

Other notable features are:- Full sprinkler system throughout, security alarm system, new flooring, new boiler and electrics.

The property is ideally located walking distance to all amenities and train station servicing London Liverpool Street. Viewing is highly

DIRECTIONS

