



Clifford Drive

Paulton, BS39 7AH

£450,000

Constructed in 2011 this family home provides plenty of internal space for growing families. This is the first time offered to the market since new and has been enjoyed by the current owners who are looking to downsize.

- First time sold since new
- Large family home
- Four double bedrooms
- Three bathrooms
- Flexible accommodation
- Ideally situated

Viewing

Please contact our Bath Stone Property (MSN) Office on 01761 360144

if you wish to arrange a viewing appointment for this property or require further information.



4



3

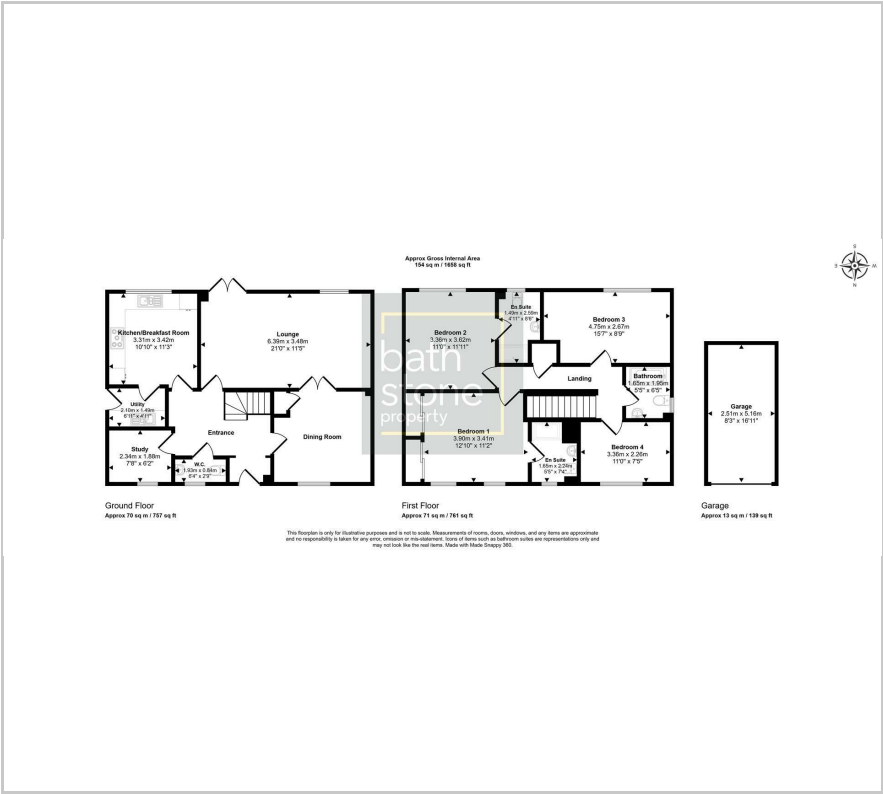


4

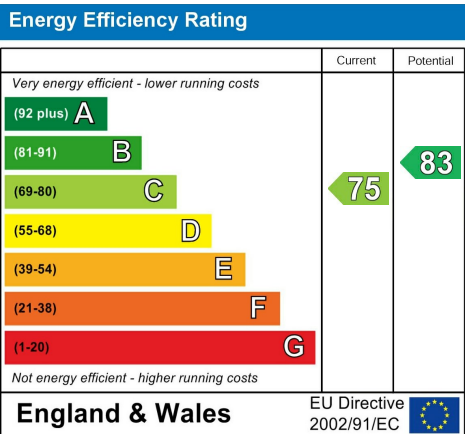


C

Floor Plan



Energy Efficiency Graph



Give us
some
feedback



SCAN ME



These particulars, whilst believed to be accurate are set out as a general outline only for guidance and do not constitute any part of an offer or contract. Intending purchasers should not rely on them as statements of representation of fact, but must satisfy themselves by inspection or otherwise as to their accuracy. No person in this firms employment has the authority to make or give any representation or warranty in respect of the property.