



The Laurels, Holcombe Hill

Holcombe, BA3 5DG

£289,950

A tardis like property covering 1196sqft of accommodation complete with cottage style rear garden. Located within the desirable village of Holcombe this could be your rural retreat.

- Vendors found!
- 1875 built cottage
- Two double bedrooms
- Delightful garden
- Village location
- Sizeable property

Viewing

Please contact our Bath Stone Property (MSN) Office on 01761 360144

if you wish to arrange a viewing appointment for this property or require further information.



2



1

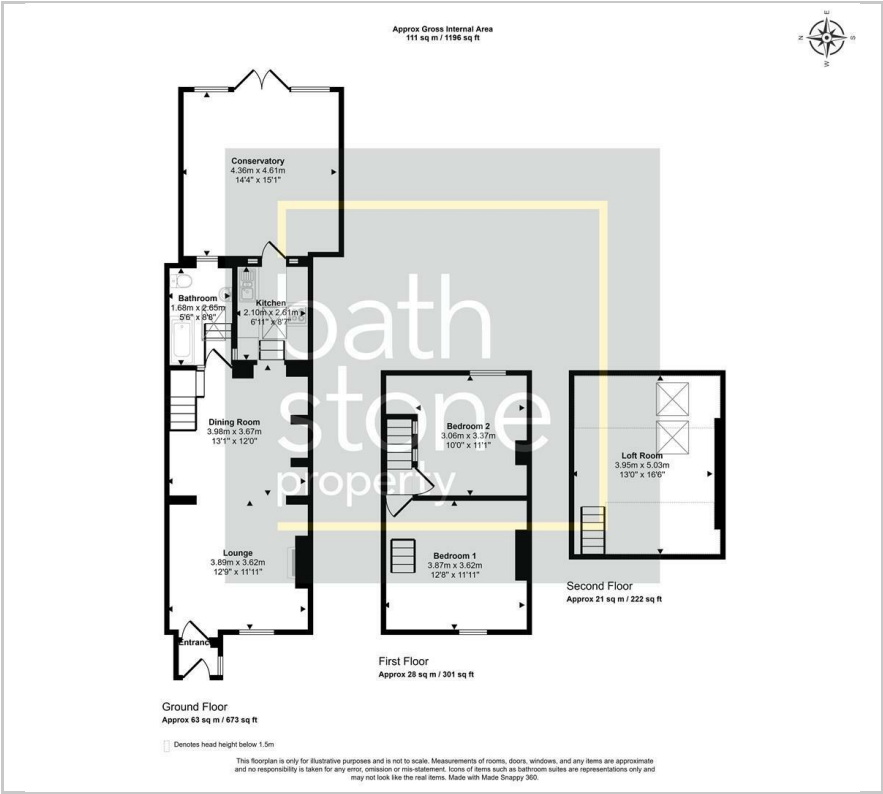


3

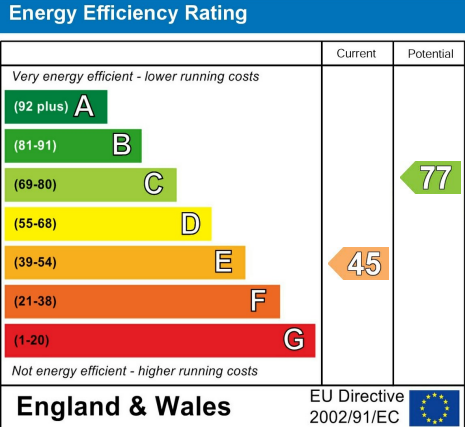


E

Floor Plan



Energy Efficiency Graph



Give us
some
feedback



These particulars, whilst believed to be accurate are set out as a general outline only for guidance and do not constitute any part of an offer or contract. Intending purchasers should not rely on them as statements of representation of fact, but must satisfy themselves by inspection or otherwise as to their accuracy. No person in this firms employment has the authority to make or give any representation or warranty in respect of the property.