



Nightingale Way

Midsomer Norton, BA3 4NL

Offers In Excess Of £350,000

If you are looking for a home with four double bedrooms then this could be what you are looking for!

Built by Linden Homes in 2013 this is the first time the property has been sold since new. Offering four double bedrooms and three bathrooms, this home is ideal for growing families.

- Four double bedrooms
- Two en-suites
- Owned solar panels
- Fronting green space
- Close to amenities
- Garage & parking

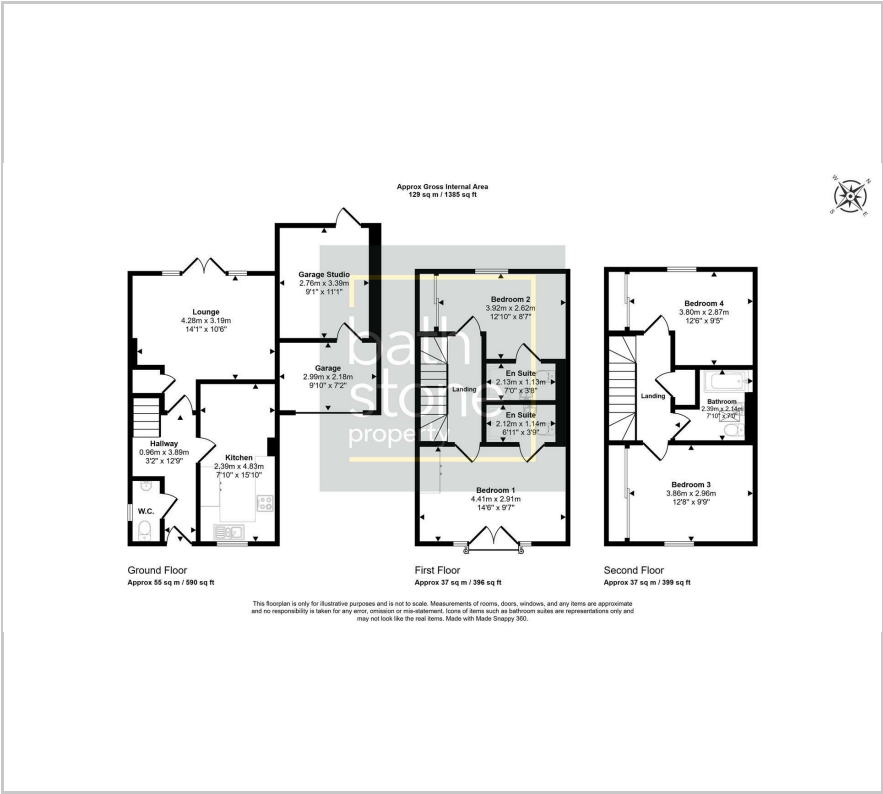
Viewing

Please contact our Bath Stone Property (MSN) Office on 01761 360144

if you wish to arrange a viewing appointment for this property or require further information.



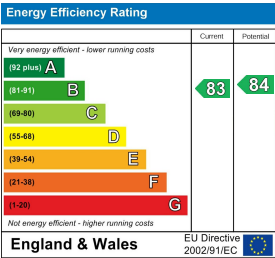
Floor Plan



Area Map



Energy Efficiency Graph



These particulars, whilst believed to be accurate are set out as a general outline only for guidance and do not constitute any part of an offer or contract. Intending purchasers should not rely on them as statements of representation of fact, but must satisfy themselves by inspection or otherwise as to their accuracy. No person in this firms employment has the authority to make or give any representation or warranty in respect of the property.