



Wells Road

Westfield, BA3 3SD

£349,950

A truly wonderful property that has plenty of character, personality and space. Extended to the rear, bay window to front and handy loft room, this is a larger than average three bedroom semi detached house from the 1930s.

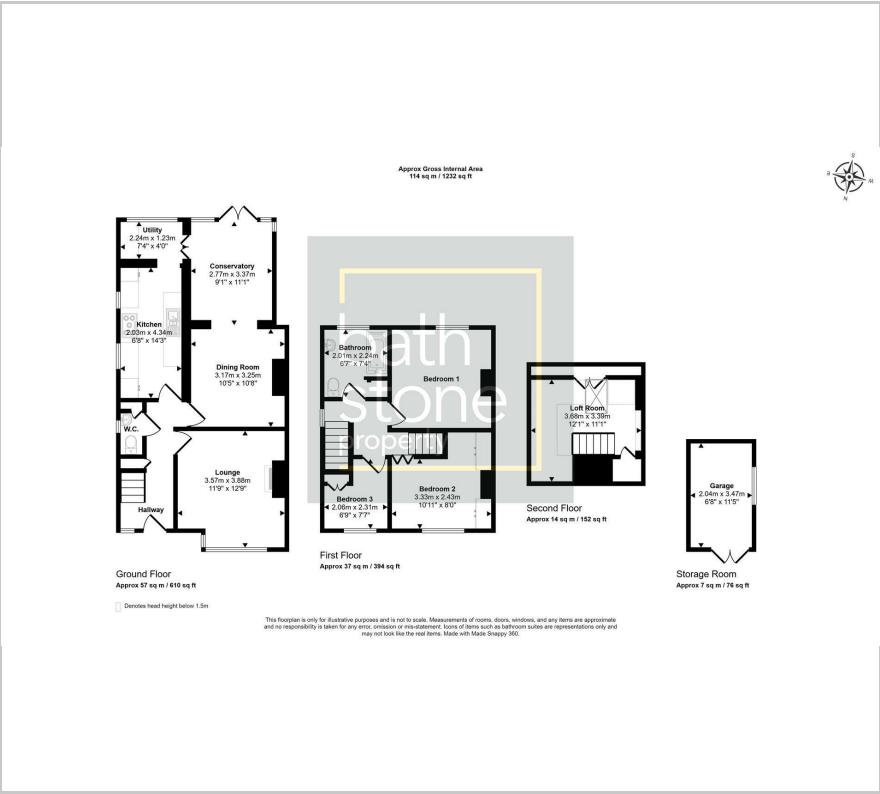
- Full of personality and character
- Bay fronted lounge
- Extended to rear
- Built 1930s
- Loft room
- Parking and garage

Viewing

Please contact our Bath Stone Property (MSN) Office on 01761 360144 if you wish to arrange a viewing appointment for this property or require further information.



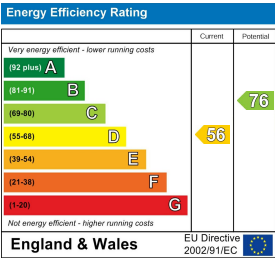
Floor Plan



Area Map



Energy Efficiency Graph



These particulars, whilst believed to be accurate are set out as a general outline only for guidance and do not constitute any part of an offer or contract. Intending purchasers should not rely on them as statements of representation of fact, but must satisfy themselves by inspection or otherwise as to their accuracy. No person in this firms employment has the authority to make or give any representation or warranty in respect of the property.