



Old England Way

Peasedown St. John, BA2 8TL

£265,000

This is an ideal first time buyer or investment opportunity!
A smart two bedroom semi detached house located within Peasedown St. John with easy access to amenities and central Bath.
Finished to a good standard this home would make a great purchase.

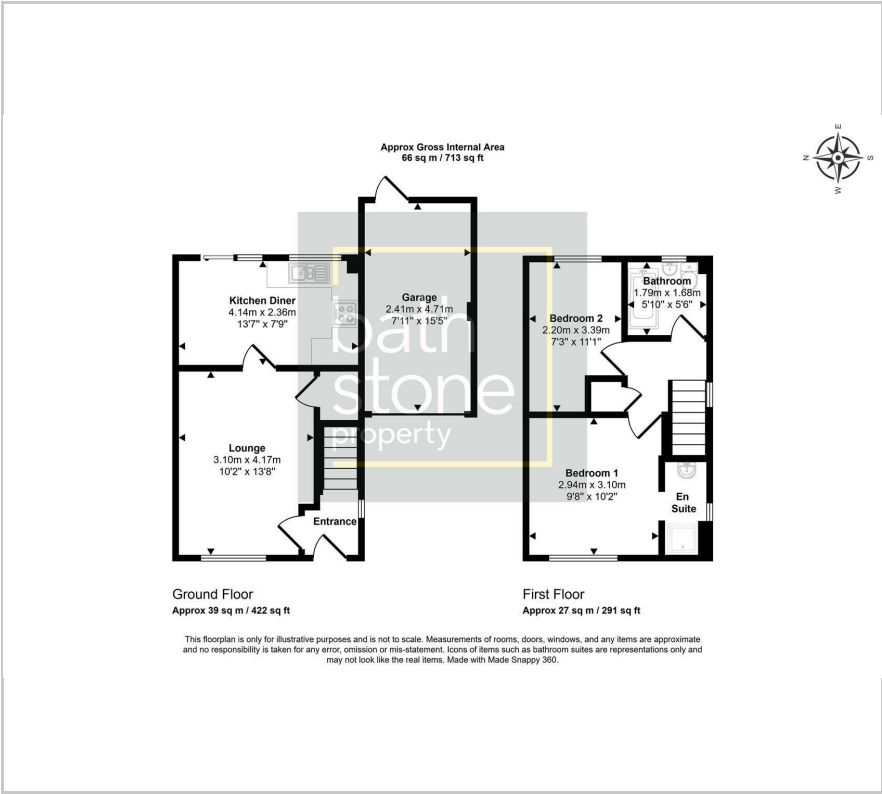
Ideal first time purchase
Newly fitting front and garage doors
Internal updating completed
En-suite shower to bedroom 1
Smart rear garden
Driveway and garage

Viewing

Please contact our Bath Stone Property (MSN) Office on 01761 360144
if you wish to arrange a viewing appointment for this property or require further information.



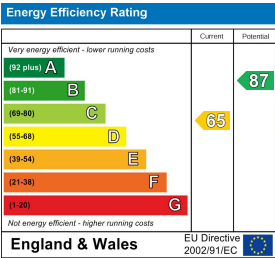
Floor Plan



Area Map



Energy Efficiency Graph



These particulars, whilst believed to be accurate are set out as a general outline only for guidance and do not constitute any part of an offer or contract. Intending purchasers should not rely on them as statements of representation of fact, but must satisfy themselves by inspection or otherwise as to their accuracy. No person in this firms employment has the authority to make or give any representation or warranty in respect of the property.