



Nightingale Way

Westfield, BA3 4GD

£359,950

With four double bedrooms, three bathrooms (two en-suite) and a South facing rear garden off lounge this is a great family home. Located within the popular Nightingale Way estate, this home is for sale for the first time since new.

- No onward sales chain!
- Four double bedrooms
- Two en-suites
- South facing garden
- Juliet balcony to front
- Garage & Driveway

Viewing

Please contact our Bath Stone Property (MSN) Office on 01761 360144

if you wish to arrange a viewing appointment for this property or require further information.



4



3

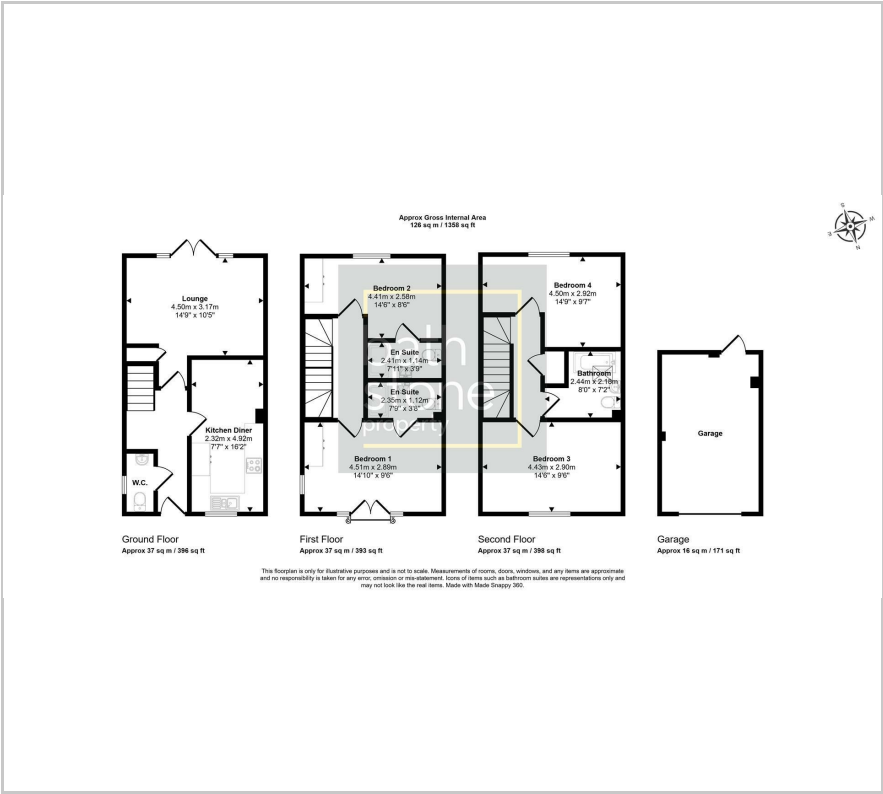


1



C

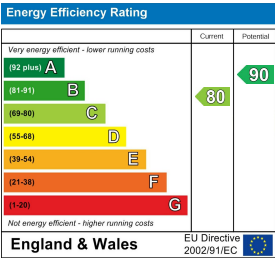
Floor Plan



Area Map



Energy Efficiency Graph



These particulars, whilst believed to be accurate are set out as a general outline only for guidance and do not constitute any part of an offer or contract. Intending purchasers should not rely on them as statements of representation of fact, but must satisfy themselves by inspection or otherwise as to their accuracy. No person in this firms employment has the authority to make or give any representation or warranty in respect of the property.