



## Russet Way

Peasedown St John, BA2 8SX

£269,950

This smart two bedroom end of terrace home is the ideal first time buy. Offering a modern interior, low maintenance outdoor space, and great parking options, this home is ready to move into!

- Vendors found!
- Modern kitchen with appliances
- Ideal first time purchase
- Two double bedrooms
- Garage and driveway parking x2
- Low maintenance rear garden

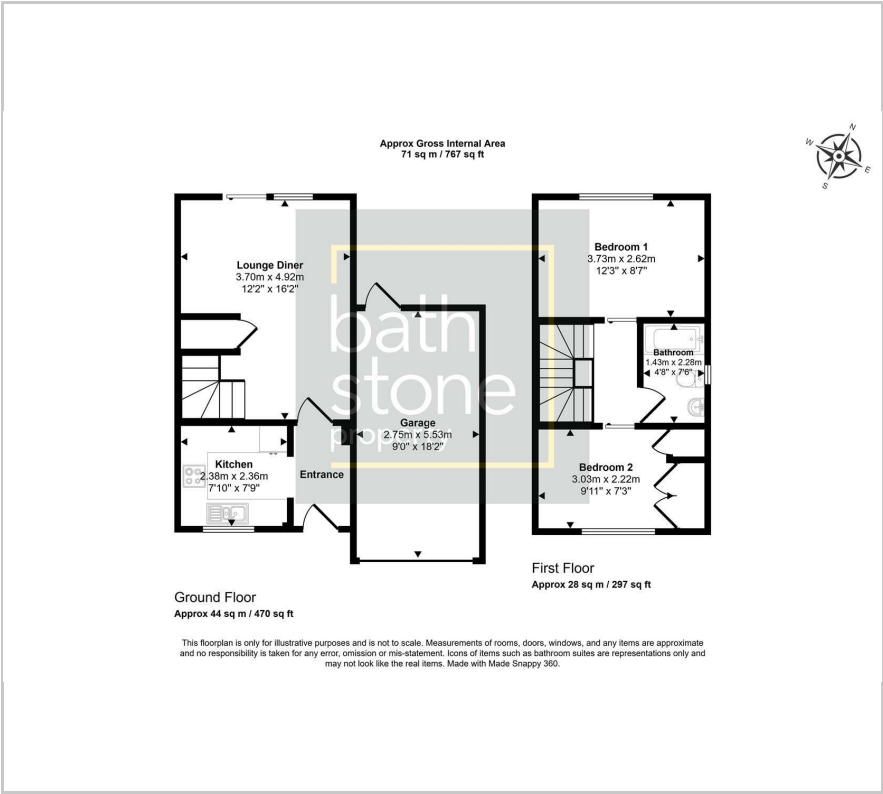
### Viewing

Please contact our Bath Stone Property (MSN) Office on 01761 360144 if you wish to arrange a viewing appointment for this property or require further information.





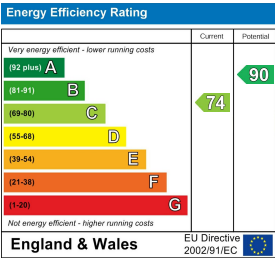
Floor Plan



Area Map



Energy Efficiency Graph



These particulars, whilst believed to be accurate are set out as a general outline only for guidance and do not constitute any part of an offer or contract. Intending purchasers should not rely on them as statements of representation of fact, but must satisfy themselves by inspection or otherwise as to their accuracy. No person in this firms employment has the authority to make or give any representation or warranty in respect of the property.