



20 Park Hayes

Leigh on Mendip, BA3 5QN

£325,000

Situated in the sought after village of Leigh on Mendip is this three bedroom end of terrace home which is a rare find with its spacious rooms, lovely flow to living space, large garden and side garage ad driveway. There is also scope to extend due to the plot size.

- No onward chain!
- Large rear garden
- Garage
- Large bedrooms
- Many upgrades
- Village setting

Viewing

Please contact our Bath Stone Property (MSN) Office on 01761 360144

if you wish to arrange a viewing appointment for this property or require further information.



3



1

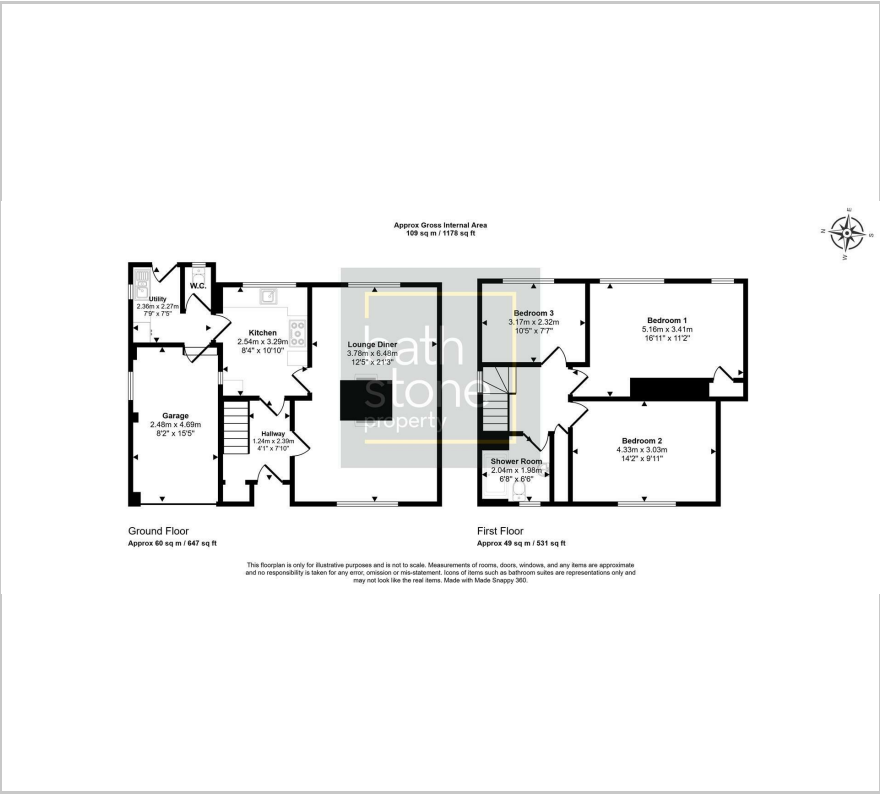


2



D

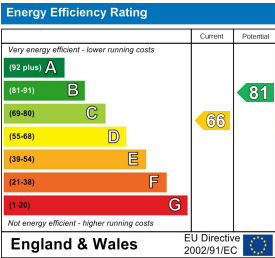
Floor Plan



Area Map



Energy Efficiency Graph



These particulars, whilst believed to be accurate are set out as a general outline only for guidance and do not constitute any part of an offer or contract. Intending purchasers should not rely on them as statements of representation of fact, but must satisfy themselves by inspection or otherwise as to their accuracy. No person in this firms employment has the authority to make or give any representation or warranty in respect of the property.