



Bridleway Close

Midsomer Norton, BA3 2LQ

£369,950

Situated within a sought after estate in Midsomer Norton, this family home combines modern living internally with a spacious and well maintained garden, making it an ideal choice for those looking for style, comfort and room to grow.

- Popular estate location
- Fantastic rear garden
- Bay fronted sitting room
- Smart kitchen/diner
- Motivated sellers
- Garage and driveway

Viewing

Please contact our Bath Stone Property (MSN) Office on 01761 360144 if you wish to arrange a viewing appointment for this property or require further information.



4



1

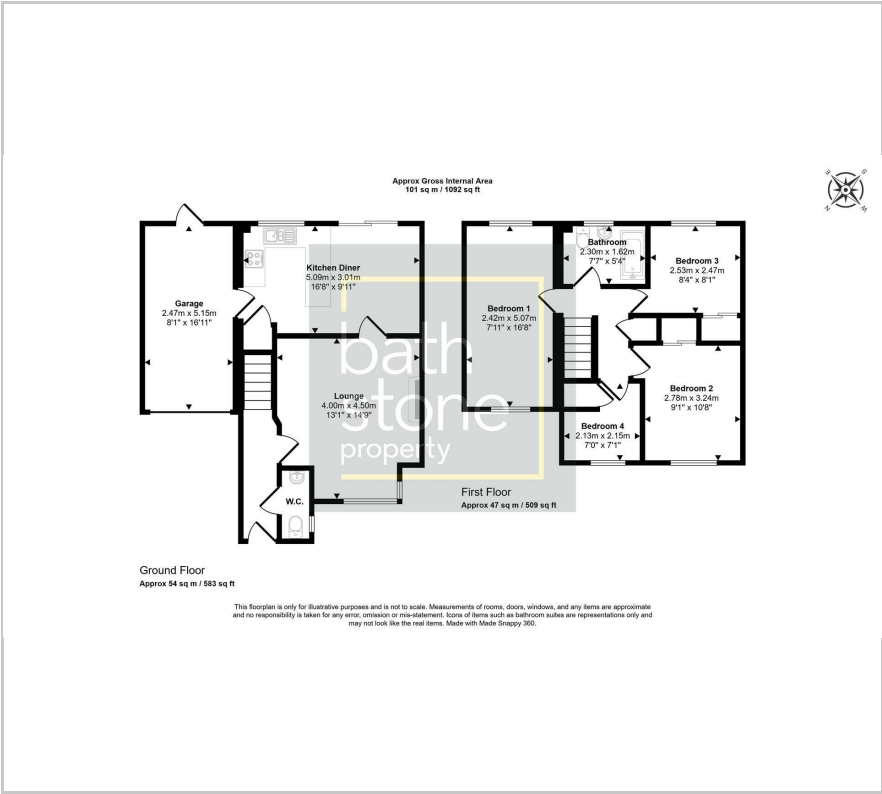


2



C

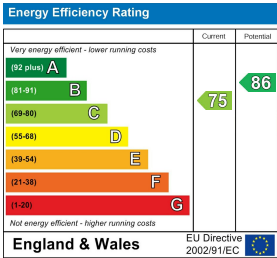
Floor Plan



Area Map



Energy Efficiency Graph



These particulars, whilst believed to be accurate are set out as a general outline only for guidance and do not constitute any part of an offer or contract. Intending purchasers should not rely on them as statements of representation of fact, but must satisfy themselves by inspection or otherwise as to their accuracy. No person in this firms employment has the authority to make or give any representation or warranty in respect of the property.